

Marine Life Graphghan

PART 10: ORCA WHALES *Right-Handed Version*

Pattern & Graphs © Alex Mikkelsen
Yarn provided by Stylecraft Yarns

Stitch: Corner-to-Corner (C2C)

Hook: G/4.00mm

Yarn: Stylecraft Special DK in Duck Egg (background),
White and Black

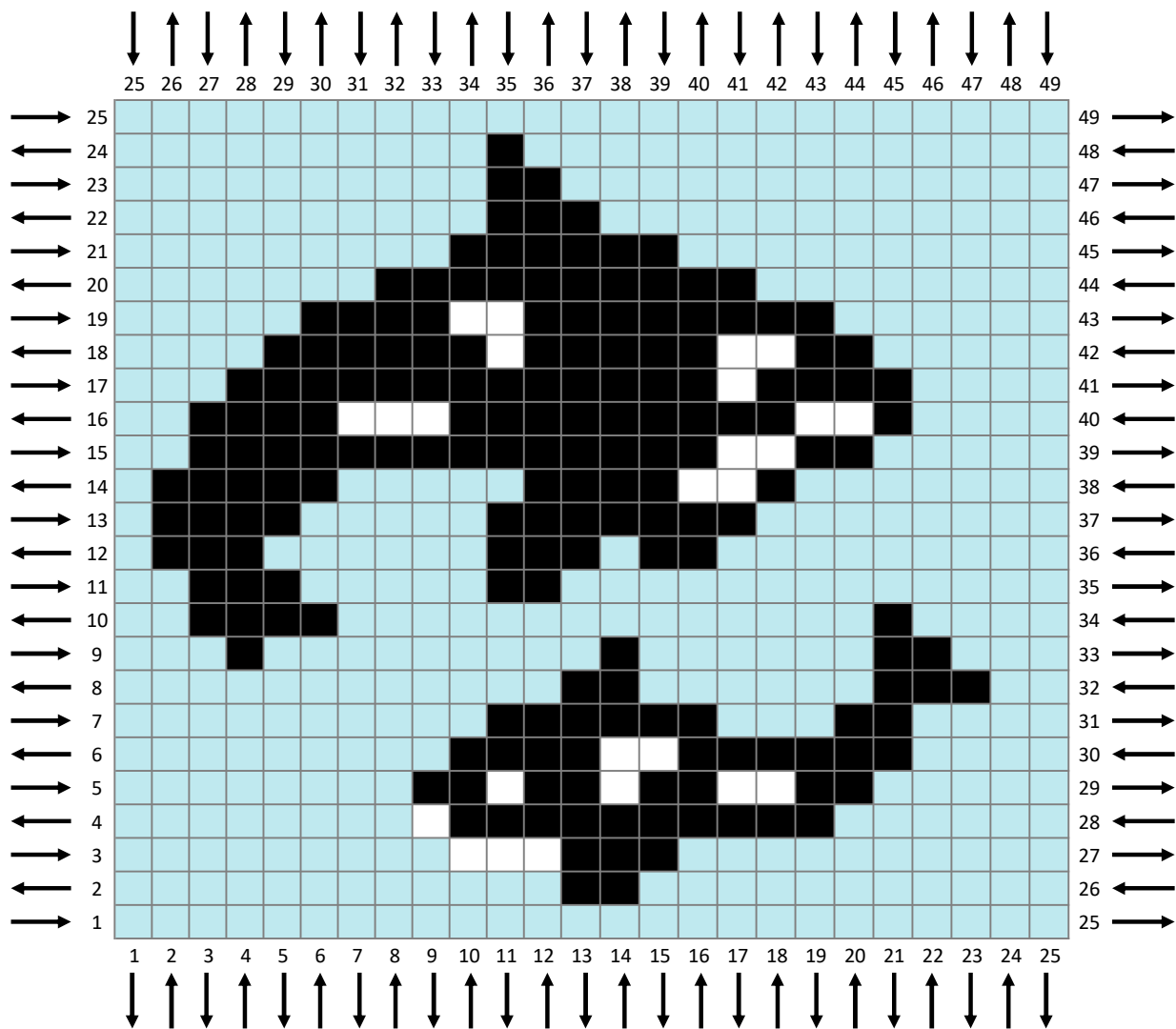
Find more at
www.twoheartscrochet.com/marine-life-cal

Right-Handed Crocheters:

Begin in the **bottom-right** corner.

Odd rows: ← ↓

Even rows: → ↑



Marine Life Graphghan

PART 10: ORCA WHALES *Left-Handed Version*

Pattern & Graphs © Alex Mikkelsen
Yarn provided by Stylecraft Yarns

Stitch: Corner-to-Corner (C2C)
Hook: G/4.00mm

Yarn: Stylecraft Special DK in Duck Egg (background),
White and Black

Find more at
www.twoheartscrochet.com/marine-life-cal

Left-Handed Crocheters:

Begin in the **bottom-left** corner.

Odd rows: → ↓

Even rows: ← ↑