

Marine Life Graphghan

PART 4: SEA TURTLE *Right-Handed Version*

Pattern & Graphs © Alex Mikkelsen
Yarn provided by Stylecraft Yarns

Stitch: Corner-to-Corner (C2C)
Hook: G/4.00mm
Yarn: Stylecraft Special DK in Storm Blue
(background), Cypress and Bottle

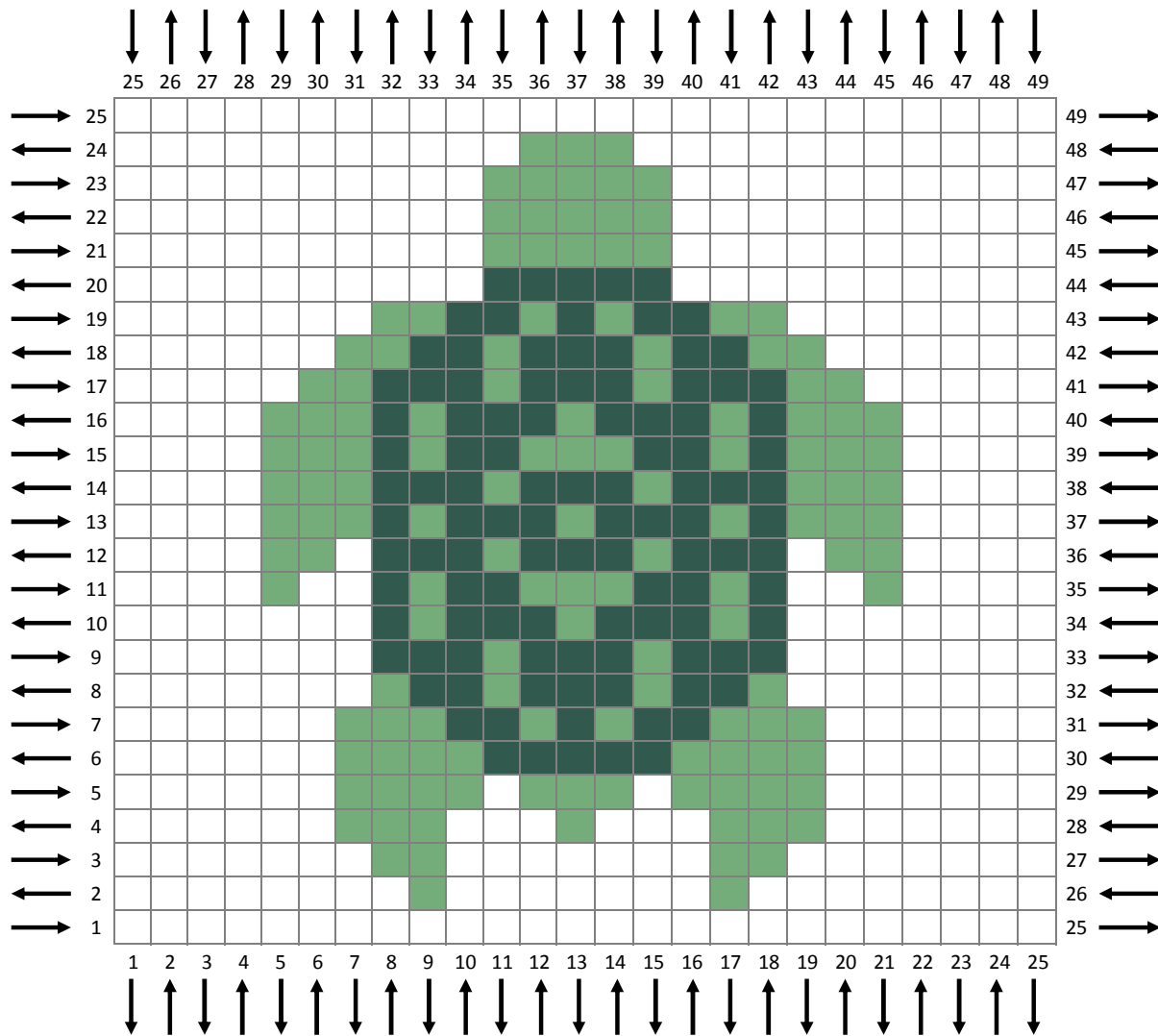
Find more at
www.twoheartscrochet.com/marine-life-cal

Right-Handed Crocheters:

Begin in the **bottom-right** corner.

Odd rows: ← ↓

Even rows: → ↑



Marine Life Graphghan

PART 4: SEA TURTLE *Left-Handed Version*

Pattern & Graphs © Alex Mikkelsen
Yarn provided by Stylecraft Yarns

Stitch: Corner-to-Corner (C2C)
Hook: G/4.00mm
Yarn: Stylecraft Special DK in Storm Blue (background), Cypress and Bottle

Find more at
www.twoheartscrochet.com/marine-life-cal

Left-Handed Crocheters:

Begin in the **bottom-left** corner.

Odd rows: → ↓

Even rows: ← ↑