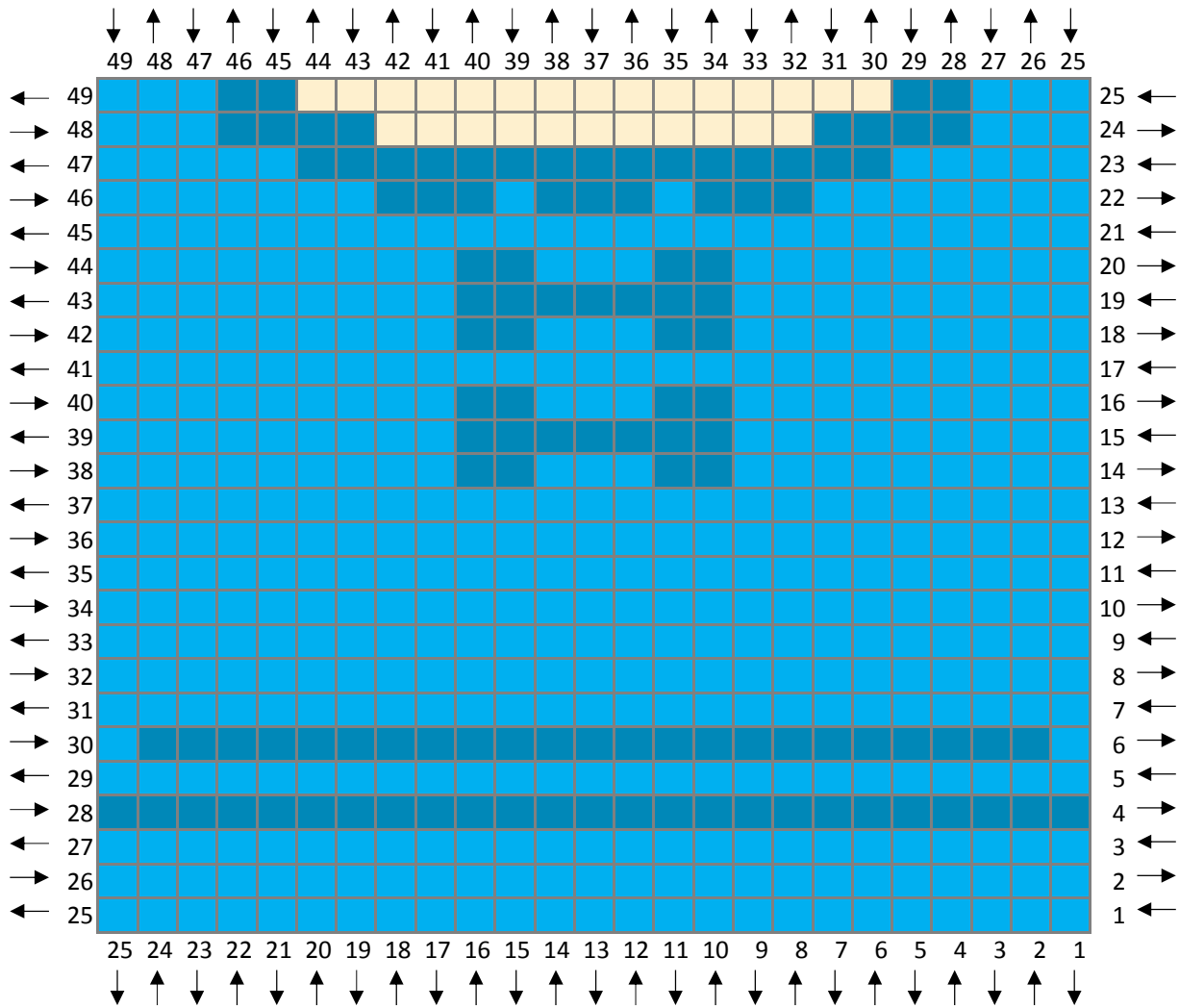


Peanuts Graphghan

Charlie Brown

Suggested Yarn is Stylecraft Special DK in:
 Black, Stone and Sunshine

- Black - B
- Stone - ST
- Sunshine - SU

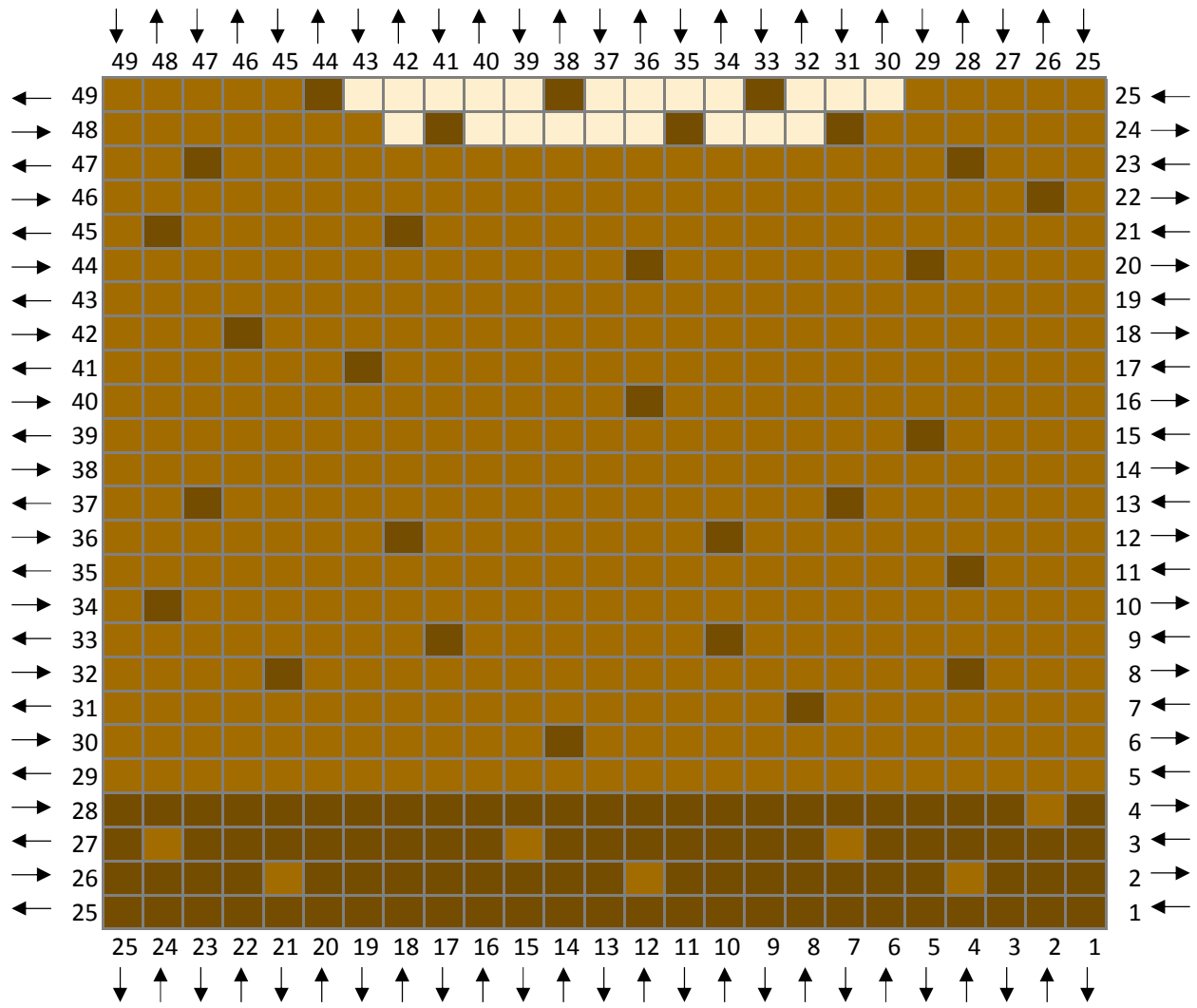


Peanuts Graphghan

Lucy

Suggested Yarn is Stylecraft Special DK in:
 Empire, Lobelia and Stone

Empire - E
 Lobelia - LB
 Stone - ST

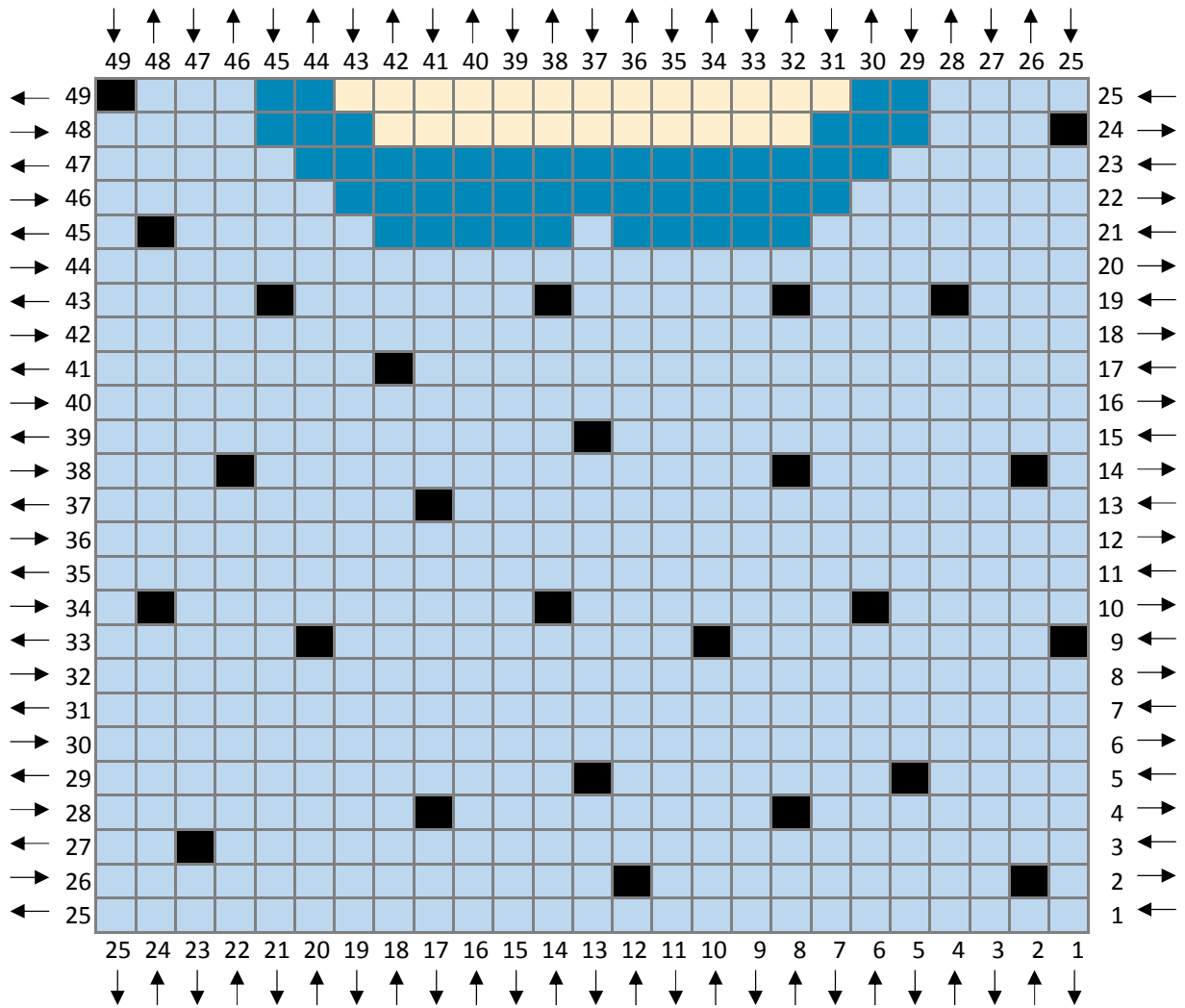


Peanuts Graphghan

Pig-Pen

Suggested Yarn is Stylecraft Special DK in:
 Mocha, Stone, Walnut

- Mocha - M
- Stone - ST
- Walnut - WA

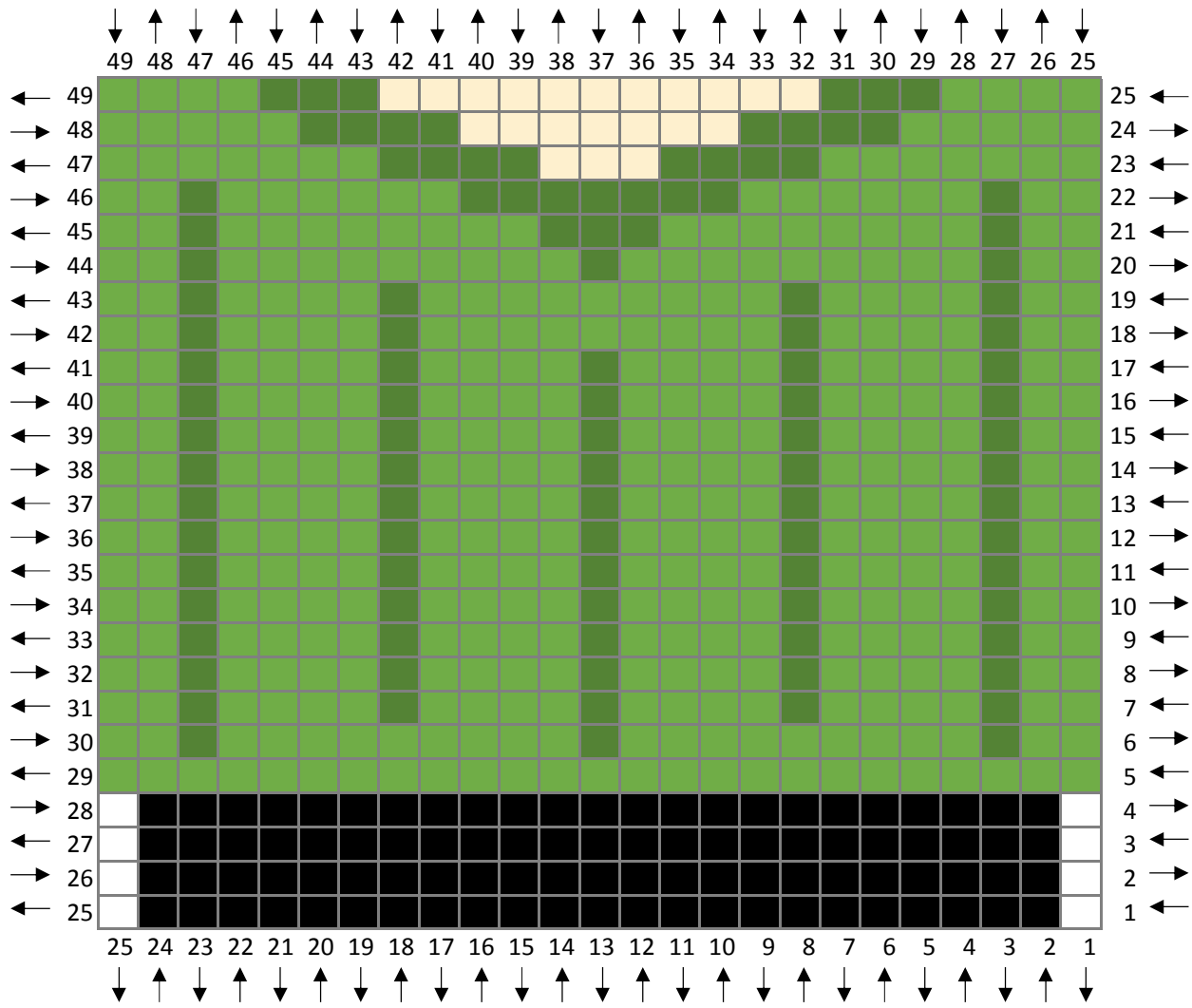


Peanuts Graphghan

Sally

Suggested Yarn is Stylecraft Special DK in:
 Aster, Black, Lobelia and Stone

- Aster - A
- Black - B
- Lobelia - LB
- Stone - ST

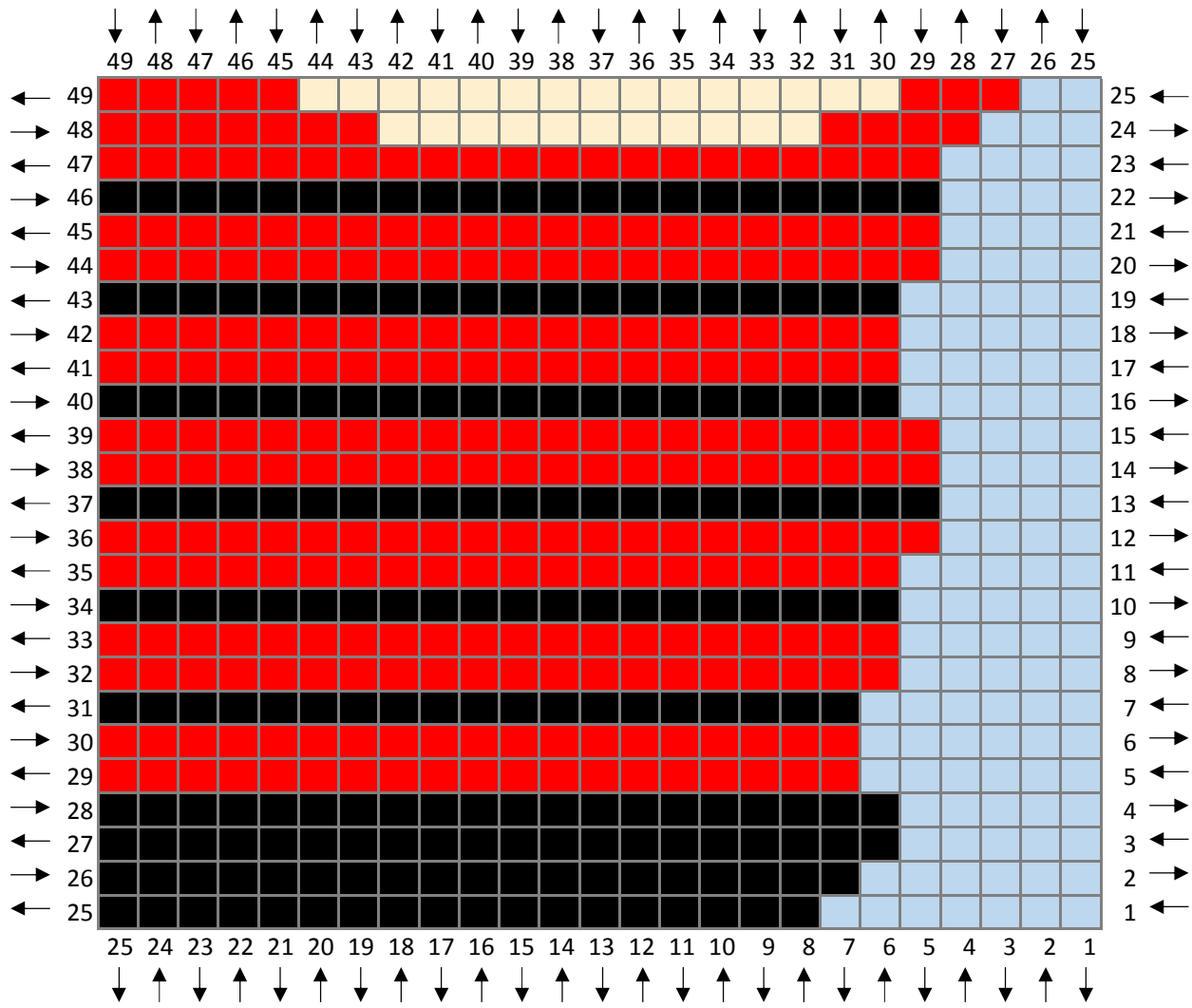


Peanuts Graphghan

Peppermint Patty

Suggested Yarn is Stylecraft Special DK in:
 Black, Grass Green, Green, Stone and White

- Black - B
- Grass Green - GG
- Green - GR
- Stone - ST
- White - WH

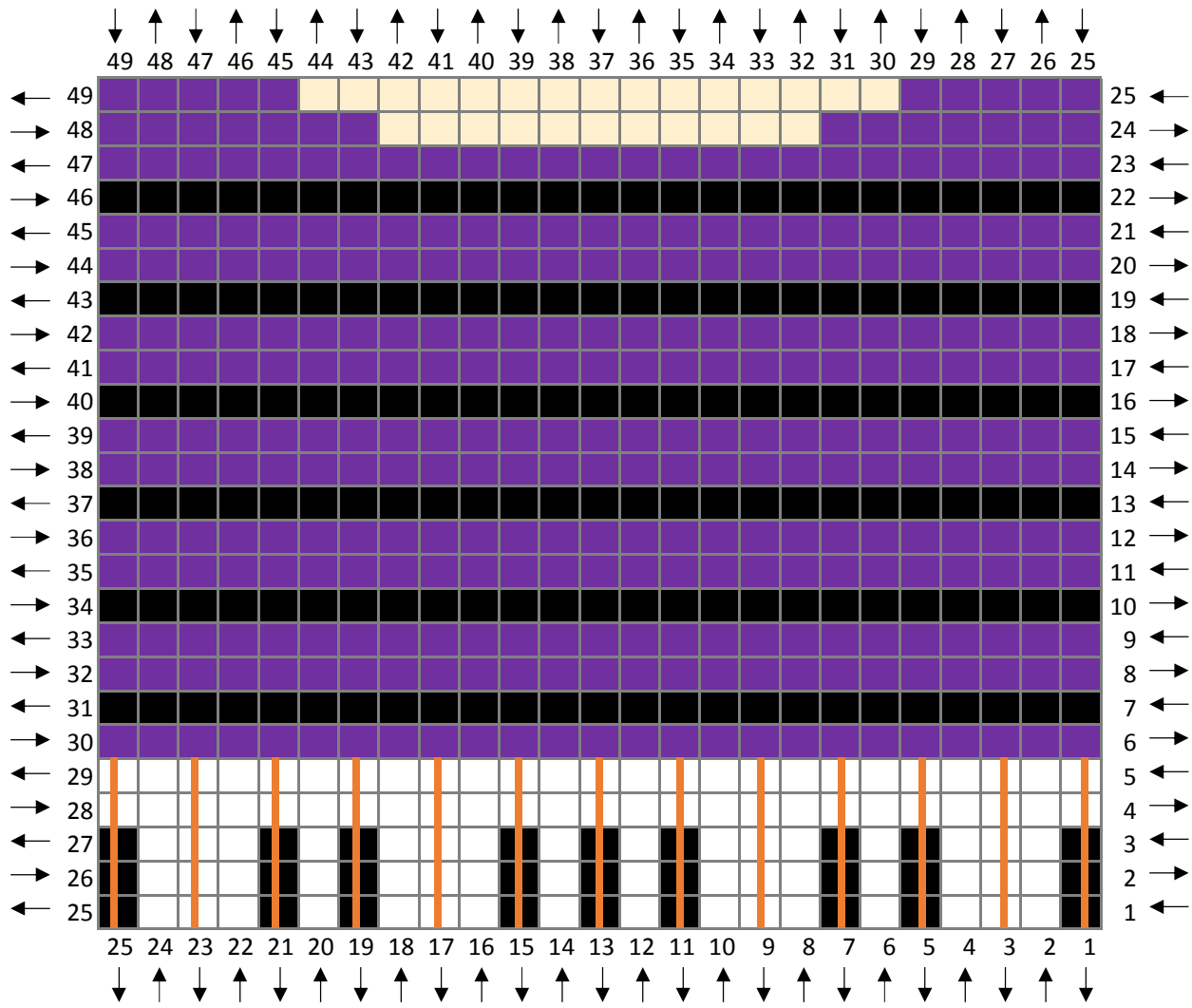


Peanuts Graphghan

Linus

Suggested Yarn is Stylecraft Special DK in:
 Aster, Black, Lipstick and Stone

- Aster - A
- Black - B
- Lipstick - R
- Stone - ST



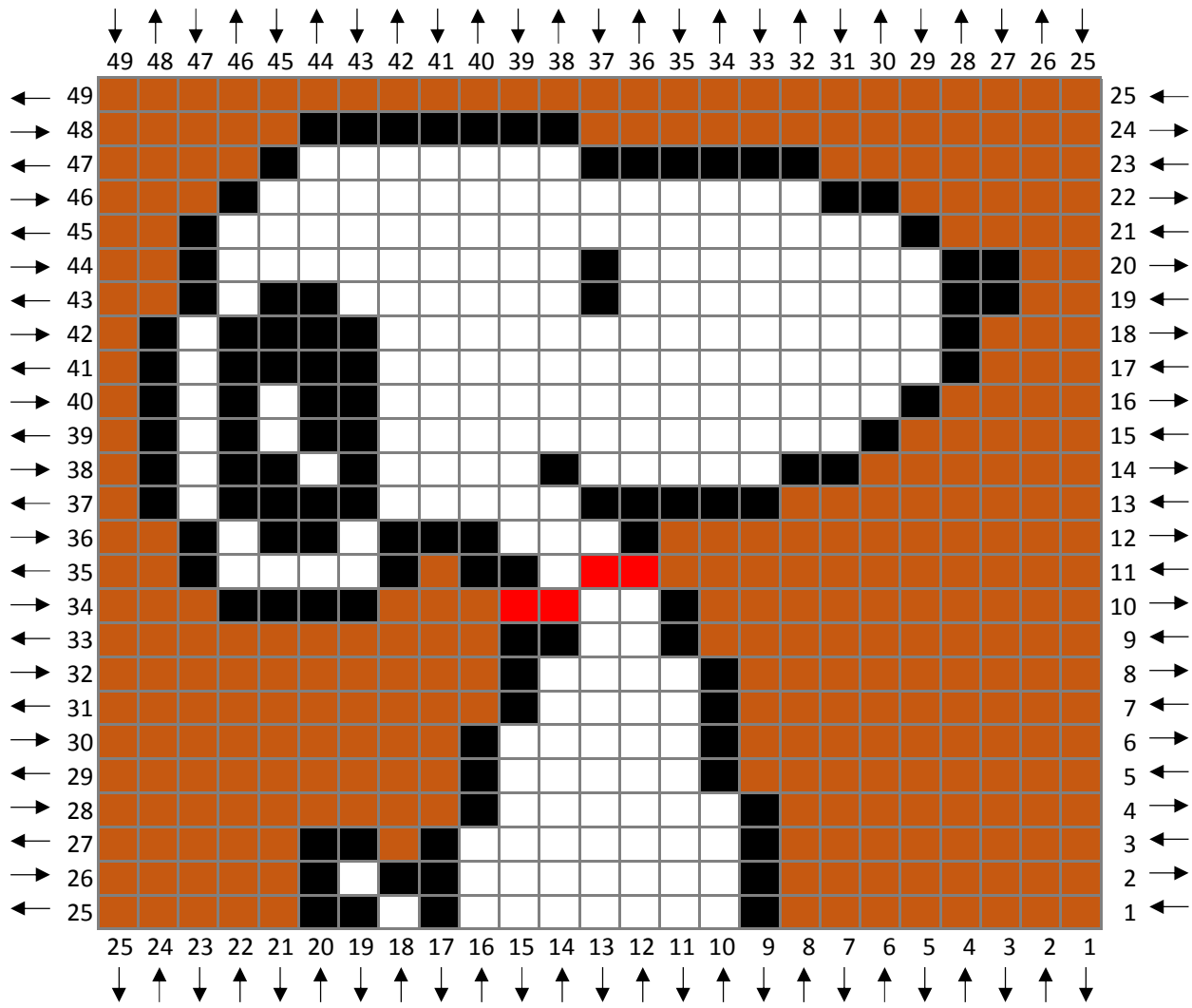
Peanuts Graphghan

Schroeder

Suggested Yarn is Stylecraft Special DK in:
 Black, Emperor, Stone and White

Black - B
 Emperor - P
 Stone - ST
 White - WH

Where indicated on the graph as orange lines, use BLACK yarn and embroider or surface stitch the black piano lines onto your C2C square.

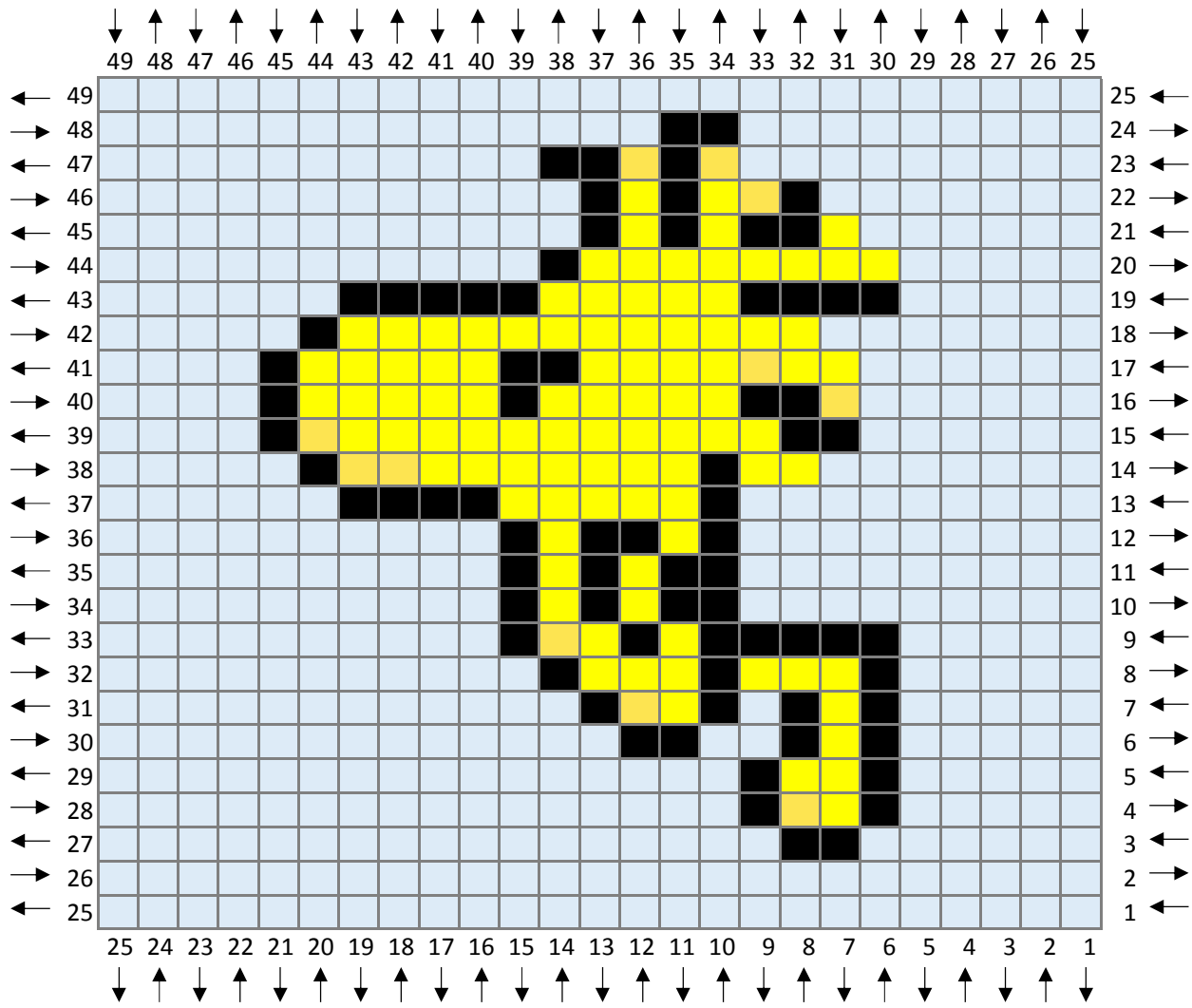


Peanuts Graphghan

Snoopy

Suggested Yarn is Stylecraft Special DK in:
 Black, Lipstick, Spice and White

- Black - B
- Lipstick - R
- Spice - SP
- White - WH



Peanuts Graphghan

Woodstock

Suggested Yarn is Stylecraft Special DK in:
Aster, Black, Buttermilk and Citron

- Aster - A
- Black - B
- Buttermilk - Y
- Citron - C