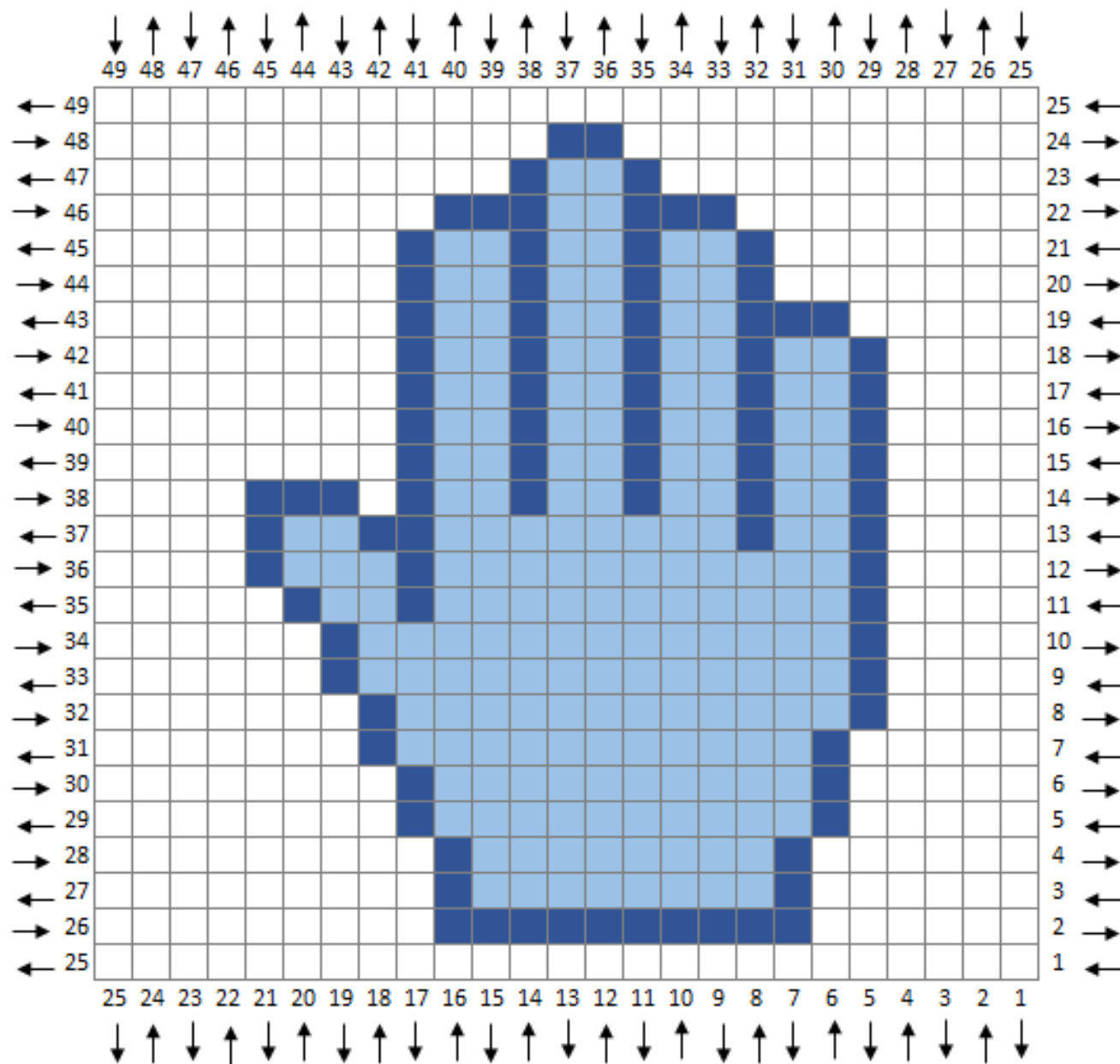


The Firefly CAL



Hands of Blue (Right)

Designed by Alex Mikkeltorg
Two Hearts Crochet
www.twoheartscrochet.com

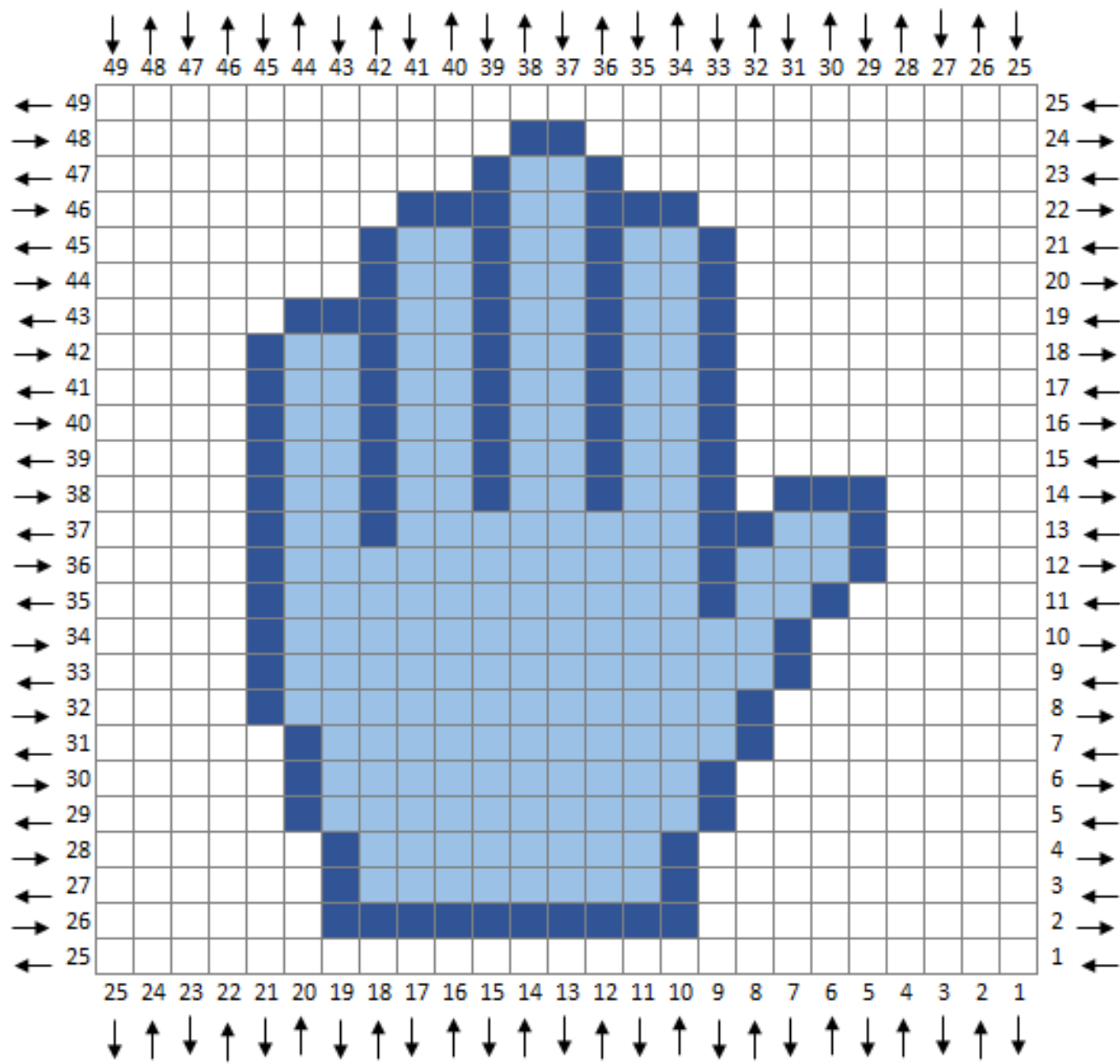
Hook Size: G/4.00mm

Stylecraft Special DK Yarns in:

Aster, Lobelia,
and a background color of your choice

Disclaimer

DISCLAIMER: THIS IS SOLELY A NOT-FOR-PROFIT FAN ACTIVITY, AND IN NO WAY INTENDS TO INFRINGE ON COPYRIGHTS HELD BY JOSS WHEDON, 20TH CENTURY FOX, OR OTHER PROFESSIONAL FIREFLY-RELATED AGENCIES.



Hands of Blue (Left)

Designed by Alex Mikkeltorg
Two Hearts Crochet
www.twoheartscrochet.com

Hook Size: G/4.00mm

Stylecraft Special DK Yarns in:

Aster, Lobelia,
and a background color of your choice

Disclaimer

DISCLAIMER: THIS IS SOLELY A NOT-FOR-PROFIT FAN ACTIVITY, AND IN NO WAY INTENDS TO INFRINGE ON COPYRIGHTS HELD BY JOSS WHEDON, 20TH CENTURY FOX, OR OTHER PROFESSIONAL FIREFLY-RELATED AGENCIES.