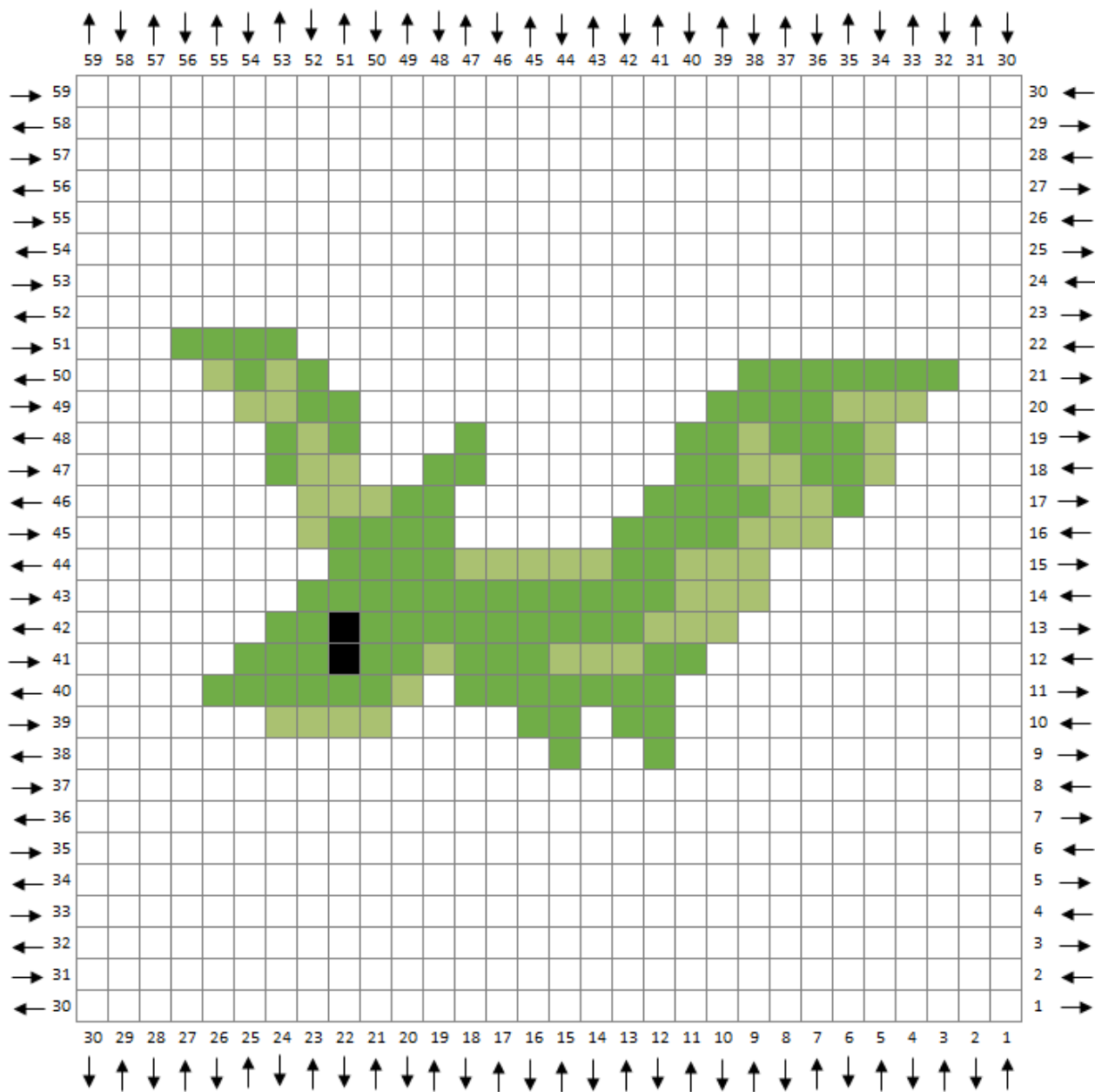


DINO CAL: PTERODACTYL



THE DINO CAL PTERODACTYL

*Designed by Alex Mikkelborg
Crafter and Creator of Two Hearts Crochet*

Hook Size: H/5.00mm

Vanna's Choice Yarns in the Following Colors:

Black, Fern, Kelly, Green,
and a background color of your choice

- Black
- Fern
- Kelly Green

DINO CAL: PTERODACTYL

Yarn Colors:

BL=Black

F=Fern

KG=Kelly Green

B=Background Color

INCREASING ROWS 1-30

Row 1: 1B (1 block)

Row 2: 2B (2 blocks)

Row 3: 3B (3 blocks)

Row 4: 4B (4 blocks)

Row 5: 5B (5 blocks)

Row 6: 6B (6 blocks)

Row 7: 7B (7 blocks)

Row 8: 8B (8 blocks)

Row 9: 9B (9 blocks)

Row 10: 10B (10 blocks)

Row 11: 11B (11 blocks)

Row 12: 12B (12 blocks)

Row 13: 13B (13 blocks)

Row 14: 14B (14 blocks)

Row 15: 15B (15 blocks)

Row 16: 16B (16 blocks)

Row 17: 17B (17 blocks)

Row 18: 18B (18 blocks)

Row 19: 19B (19 blocks)

Row 20: 11B, 1KG, 8B (20 blocks)

Row 21: 9B, 1KG, 11B (21 blocks)

Row 22: 4B, 1F, 1KG, 1F, 1B, 2F, 3KG, 9B (22 blocks)

Row 23: 8B, 1KG, 1B, 2KG, 5F, 1KG, 2F, 1KG, 2B (23 blocks)

Row 24: 3B, 1KG, 1F, 2KG, 6F, 2KG, 9B (24 blocks)

Row 25: 9B, 2KG, 1F, 2KG, 1F, 2KG, 1F, 1KG, 1F, 1KG, 4B (25 blocks)

Row 26: 5B, 3KG, 1F, 5KG, 1F, 1KG, 10B (26 blocks)

Row 27: 10B, 8KG, 1F, 2KG, 6B (27 blocks)

Row 28: 7B, 6KG, 1F, 4KG, 10B (28 blocks)

Row 29: 11B, 3KG, 1F, 3B, 3KG, 8B (29 blocks)

Row 30: 15B, 1F, 2KG, 3F, 9B (30 blocks)

DECREASING ROWS 31-59

Row 31: 8B, 1F, 4KG, 1F, 15B (29 blocks)

Row 32: 15B, 1F, 4KG, 1F, 7B (28 blocks)

Row 33: 6B, 1F, 1KG, 1BL, 3KG, 15B (27 blocks)

Row 34: 14B, 3KG, 1BL, 2KG, 6B (26 blocks)

Row 35: 5B, 8KG, 12B (25 blocks)

Row 36: 11B, 9KG, 4B (24 blocks)

Row 37: 8B, 1KG, 1F, 13B (23 blocks)

Row 38: 13B, 2F, 7B (22 blocks)

Row 39: 7B, 2F, 12B (21 blocks)

Row 40: 11B, 1KG, 1F, 7B (20 blocks)

Row 41: 6B, 1KG, 1F, 1KG, 10B (19 blocks)

Row 42: 10B, 2KG, 6B (18 blocks)

Row 43: 6B, 1F, 1KG, 9B (17 blocks)

Row 44: 9B, 2F, 5B (16 blocks)

Row 45: 5B, 2KG, 8B (15 blocks)

Row 46: 8B, 1KG, 1F, 4B (14 blocks)

Row 47: 4B, 1KG, 8B (13 blocks)

Row 48: 8B, 1KG, 3B (12 blocks)

Row 49: 11B (11 blocks)

Row 50: 10B (10 blocks)

Row 51: 9B (9 blocks)

Row 52: 8B (8 blocks)

Row 53: 7B (7 blocks)

Row 54: 6B (6 blocks)

Row 55: 5B (5 blocks)

Row 56: 4B (4 blocks)

Row 57: 3B (3 blocks)

Row 58: 2B (2 blocks)

Row 59: 1B (1 block)