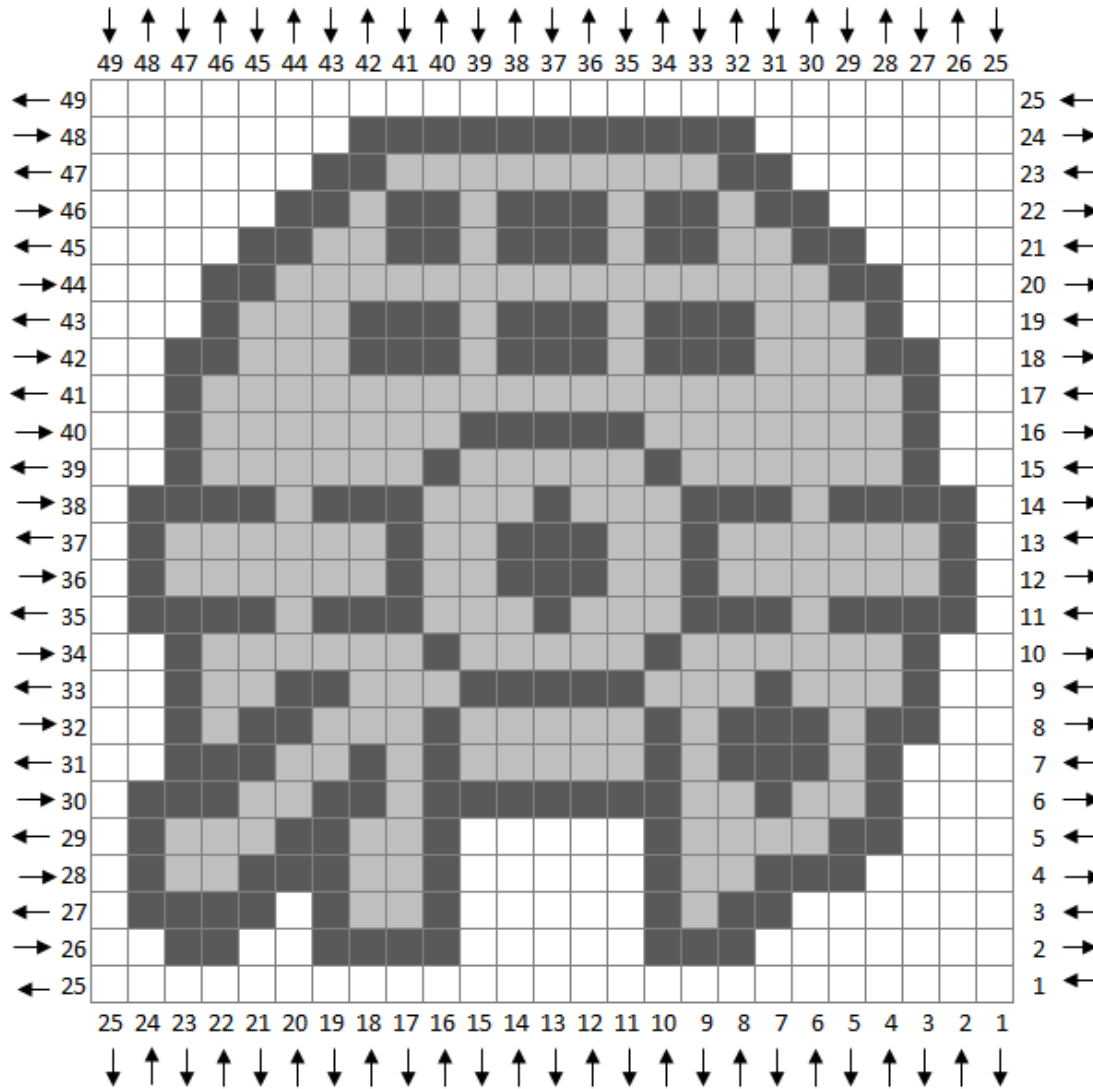


# STAR WARS CAL ALTERNATE PANEL: MILLENNIUM FALCON



## Star Wars CAL Millennium Falcon

Recommended Hook: Size G6/4 mm

### Yarn Suggestions

Vanna's Choice - Silver Grey, Silver Heather

I Love This Yarn - Metallic Black (Background)

VC - Silver Grey  
VC - Silver Heather

### IMPORTANT NOTES:

If you are using Straight HDC, ignore the arrows on the graph; these are designed for use with the C2C technique.

**To do as I do**, chain 52 (50 + 2 turning chains). Following the arrows on the left/right, start in the 3<sup>rd</sup> ch space from the hook and begin row 1.

Work 2 HDC per block on the graph. Work each row twice. The FIRST time you work a row, read the graph from right to left. The SECOND time you work a row, read the graph from left to right. Then continue onto the next row using this same technique.

**Yarn Colors:**

SG=Silver Grey

SH=Silver Heather

B=Background Color

**STAR WARS CAL ALTERNATE PANEL: MILLENNIUM FALCON**

Row 1: 50B (50 sts)

Row 2: 14B, 6SG, 10B, 8SG, 4B, 4SG, 4B (50 sts)

Row 3: 12B, 4SG, 2SH, 2SG, 10B, 2SG, 4SH, 2SG, 2B, 8SG, 2B (50 sts)

Row 4: 8B, 6SG, 4SH, 2SG, 10B, 2SG, 4SH, 6SG, 4SH, 2SG, 2B (50 sts)

Row 5: 6B, 4SG, 8SH, 2SG, 10B, 2SG, 4SH, 4SG, 6SH, 2SG, 2B (50 sts)

Row 6: 6B, 2SG, 4SH, 2SG, 4SH, 14SG, 2SH, 4SG, 4SH, 6SG, 2B (50 sts)

Row 7: 6B, 2SG, 2SH, 6SG, 2SH, 2SG, 10SH, 2SG, 2SH, 2SG, 4SH, 6SG, 4B (50 sts)

Row 8: 4B, 4SG, 2SH, 6SG, 2SH, 2SG, 10SH, 2SG, 6SH, 4SG, 2SH, 2SG, 4B (50 sts)

Row 9: 4B, 2SG, 6SH, 2SG, 6SH, 10SG, 6SH, 4SG, 4SH, 2SG, 4B (50 sts)

Row 10: 4B, 2SG, 12SH, 2SG, 10SH, 2SG, 12SH, 2SG, 4B (50 sts)

Row 11: 2B, 8SG, 2SH, 6SG, 6SH, 2SG, 6SH, 6SG, 2SH, 8SG, 2B (50 sts)

Row 12: 2B, 2SG, 12SH, 2SG, 4SH, 6SG, 4SH, 2SG, 12SH, 2SG, 2B (50 sts)

Row 13: 2B, 2SG, 12SH, 2SG, 4SH, 6SG, 4SH, 2SG, 12SH, 2SG, 2B (50 sts)

Row 14: 2B, 8SG, 2SH, 6SG, 6SH, 2SG, 6SH, 6SG, 2SH, 8SG, 2B (50 sts)

Row 15: 4B, 2SG, 12SH, 2SG, 10SH, 2SG, 12SH, 2SG, 4B (50 sts)

Row 16: 4B, 2SG, 14SH, 10SG, 14SH, 2SG, 4B (50 sts)

Row 17: 4B, 2SG, 38SH, 2SG, 4B (50 sts)

Row 18: 4B, 4SG, 6SH, 6SG, 2SH, 6SG, 2SH, 6SG, 6SH, 4SG, 4B (50 sts)

Row 19: 6B, 2SG, 6SH, 6SG, 2SH, 6SG, 2SH, 6SG, 6SH, 2SG, 6B (50 sts)

Row 20: 6B, 4SG, 30SH, 4SG, 6B (50 sts)

Row 21: 8B, 4SG, 4SH, 4SG, 2SH, 6SG, 2SH, 4SG, 4SH, 4SG, 8B (50 sts)

Row 22: 10B, 4SG, 2SH, 4SG, 2SH, 6SG, 2SH, 4SG, 2SH, 4SG, 10B (50 sts)

Row 23: 12B, 4SG, 18SH, 4SG, 12B (50 sts)

Row 24: 14B, 22SG, 14B (50 sts)

Row 25: 50B (50 sts)

**IMPORTANT NOTES:**

These written instructions include color/stitch counts for doing 2 HDC per block. **HOWEVER**, the rows are not doubled here. To double the rows by reading the written instructions only, follow the directions below.

The **FIRST** time you work a row, read the instructions from left to right. The **SECOND** time you work a row, read the instructions backwards from right to left. Then continue onto the next row using this same technique.