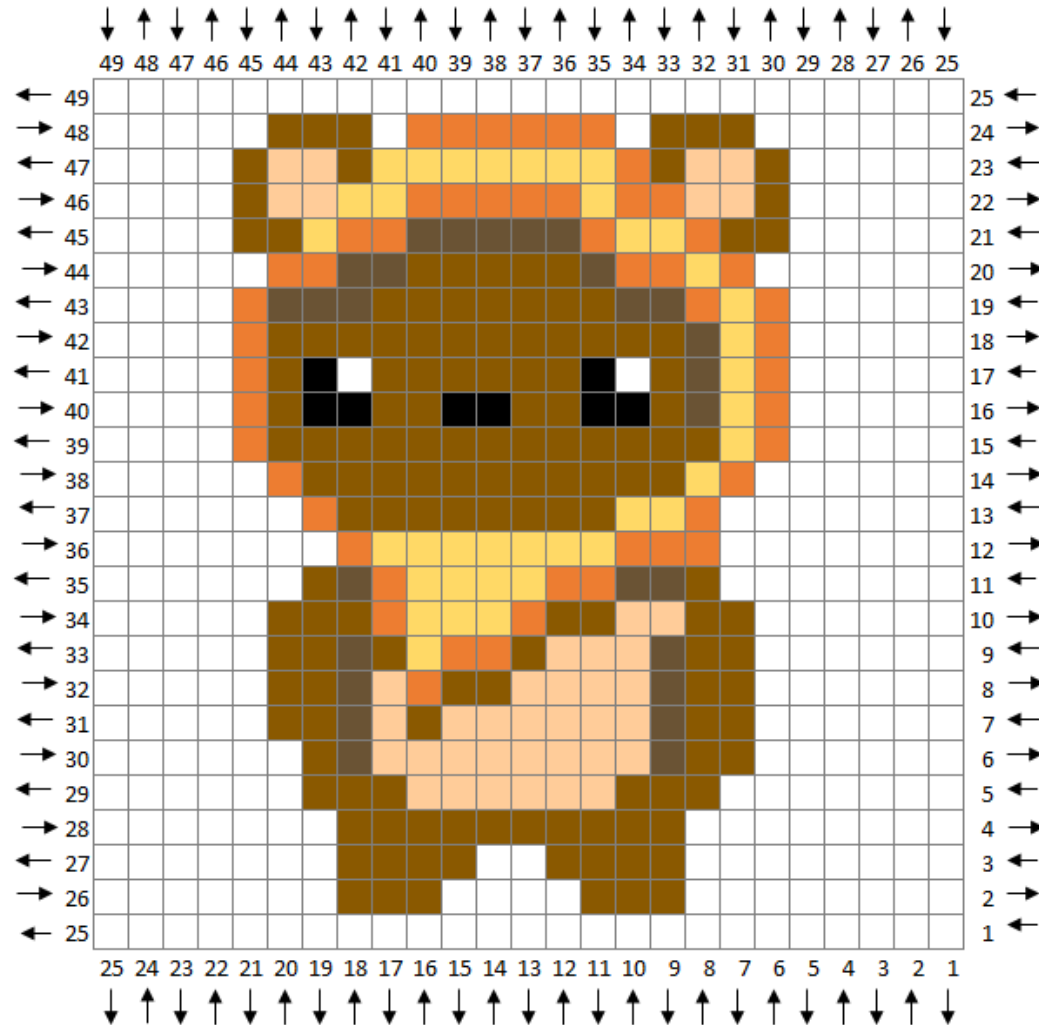


STAR WARS CAL ALTERNATE PANEL: EWOK



Star Wars CAL Ewok

Recommended Hook: Size G6/4 mm

Yarn Suggestions

Vanna's Choice - Black, Fisherman, Honey,
Radiant Yellow, Rust, Taupe, White

I Love This Yarn - Metallic Black (Background)

	VC - Black
	VC - Fisherman
	VC - Honey
	VC - Radiant Yellow
	VC - Rust
	VC - Taupe
	VC - White

IMPORTANT NOTES:

If you are using Straight HDC, ignore the arrows on the graph; these are designed for use with the C2C technique.

To do as I do, chain 52 (50 + 2 turning chains). Following the arrows on the left/right, start in the 3rd ch space from the hook and begin row 1.

Work 2 HDC per block on the graph. Work each row twice. The FIRST time you work a row, read the graph from right to left. The SECOND time you work a row, read the graph from left to right. Then continue onto the next row using this same technique.

STAR WARS CAL ALTERNATE PANEL: EWOK

Yarn Colors:

BL=Black

F=Fisherman

H=Honey

Y=Radiant Yellow

O=Rust

T=Taupe

W=White

B=Background Color

Row 1: 50B (50 sts)

Row 2: 16B, 6H, 8B, 6H, 14B (50 sts)

Row 3: 16B, 8H, 4B, 8H, 14B (50 sts)

Row 4: 16B, 20H, 14B (50 sts)

Row 5: 14B, 6H, 12F, 6H, 12B (50 sts)

Row 6: 12B, 4H, 2T, 16F, 2T, 2H, 12B (50 sts)

Row 7: 12B, 4H, 2T, 12F, 2H, 2F, 2T, 4H, 10B (50 sts)

Row 8: 12B, 4H, 2T, 8F, 4H, 2O, 2F, 2T, 4H, 10B (50 sts)

Row 9: 12B, 4H, 2T, 6F, 2H, 4O, 2Y, 2H, 2T, 4H, 10B (50 sts)

Row 10: 12B, 4H, 4F, 4H, 2O, 6Y, 2O, 6H, 10B (50 sts)

Row 11: 14B, 2H, 4T, 4O, 8Y, 2O, 2T, 2H, 12B (50 sts)

Row 12: 14B, 6O, 14Y, 2O, 14B (50 sts)

Row 13: 14B, 2O, 4Y, 16H, 2O, 12B (50 sts)

Row 14: 12B, 2O, 2Y, 22H, 2O, 10B (50 sts)

Row 15: 10B, 2O, 2Y, 26H, 2O, 8B (50 sts)

Row 16: 10B, 2O, 2Y, 2T, 2H, 4BL, 4H, 4BL, 4H, 4BL, 2H, 2O, 8B (50 sts)

Row 17: 10B, 2O, 2Y, 2T, 2H, 2W, 2BL, 12H, 2W, 2BL, 2H, 2O, 8B (50 sts)

Row 18: 10B, 2O, 2Y, 2T, 24H, 2O, 8B (50 sts)

Row 19: 10B, 2O, 2Y, 2O, 4T, 14H, 6T, 2O, 8B (50 sts)

Row 20: 12B, 2O, 2Y, 4O, 2T, 10H, 4T, 4O, 10B (50 sts)

Row 21: 10B, 4H, 2O, 4Y, 2O, 10T, 4O, 2T, 4H, 8B (50 sts)

Row 22: 10B, 2H, 4F, 4O, 2Y, 10 O, 4Y, 4F, 2H, 8B (50 sts)

Row 23: 10B, 2H, 4F, 2H, 2O, 14Y, 2H, 4F, 2H, 8B (50 sts)

Row 24: 12B, 6H, 2B, 12O, 2B, 6H, 10B (50 sts)

Row 25: 50B (50 sts)

IMPORTANT NOTES:

These written instructions include color/stitch counts for doing 2 HDC per block. **HOWEVER**, the rows are not doubled here. To double the rows by reading the written instructions only, follow the directions below.

The **FIRST** time you work a row, read the instructions from left to right. The **SECOND** time you work a row, read the instructions backwards from right to left. Then continue onto the next row using this same technique.