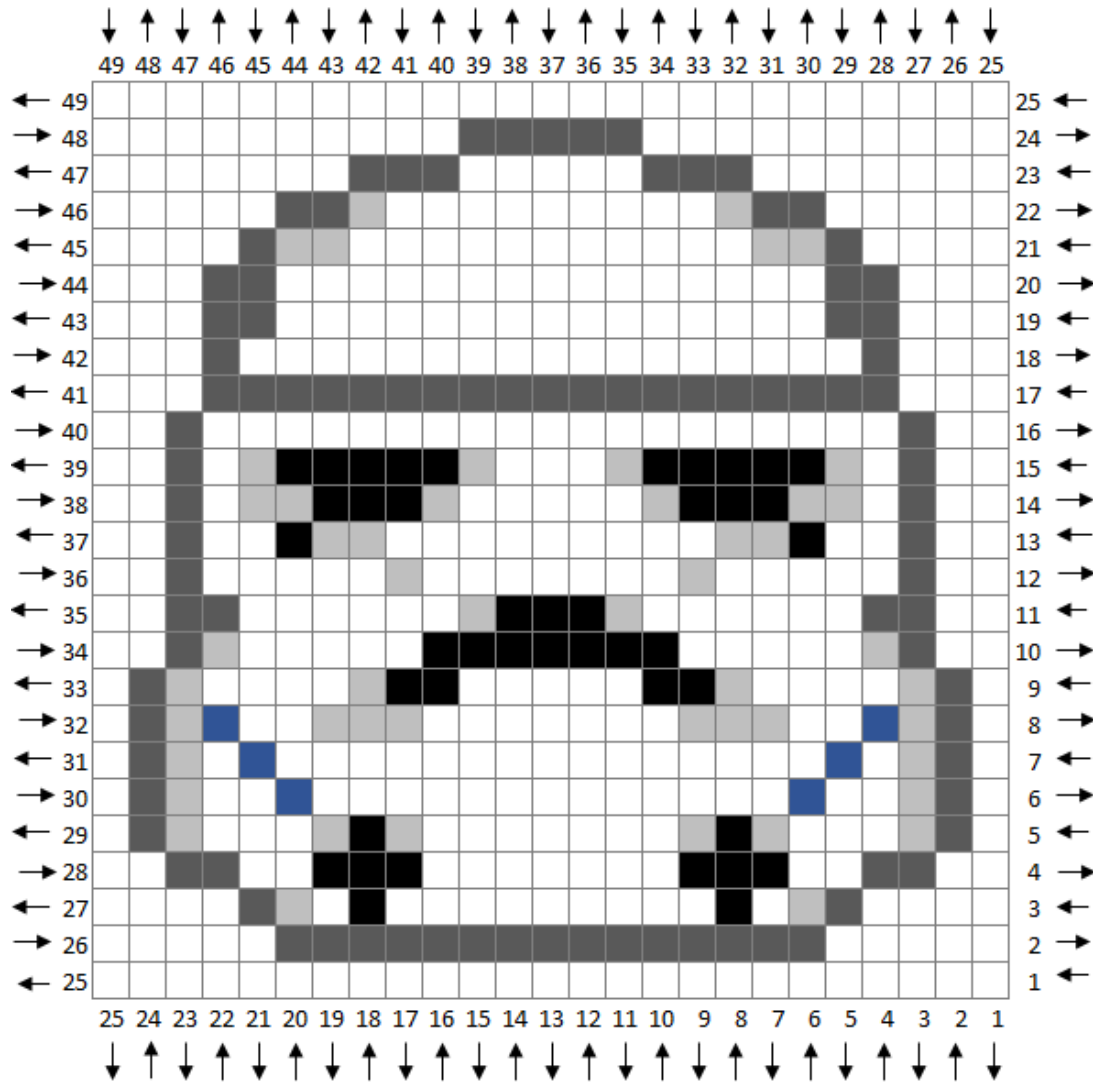


# STAR WARS CAL PANEL: STORM TROOPER



## Star Wars CAL Storm Trooper

Recommended Hook: Size G6/4 mm

### Yarn Suggestions

Vanna's Choice - Black, Colonial Blue,  
Silver Grey, Silver Heather

I Love This Yarn - Metallic Black (Background)

- VC - Black
- VC - Colonial Blue
- VC - Silver Grey
- VC - Silver Heather
- VC - White

### IMPORTANT NOTES:

If you are using Straight HDC, ignore the arrows on the graph; these are designed for use with the C2C technique.

**To do as I do**, chain 52 (50 + 2 turning chains). Following the arrows on the left/right, start in the 3<sup>rd</sup> ch space from the hook and begin row 1.

Work 2 HDC per block on the graph. Work each row twice. The FIRST time you work a row, read the graph from right to left. The SECOND time you work a row, read the graph from left to right. Then continue onto the next row using this same technique.

## STAR WARS CAL PANEL: STORM TROOPER

### Yarn Colors:

BL=Black  
SH=Silver Heather

CB=Colonial Blue  
W=White

SG=Silver Grey  
B=Background

Row 1: 50B (50 sts)

Row 2: 10B, 30SG, 10B (50 sts)

Row 3: 8B, 2SG, 2SH, 2W, 2BL, 18W, 2BL, 2W, 2SH, 2SG, 8B (50 sts)

Row 4: 4B, 4SG, 4W, 6BL, 14W, 6BL, 4W, 4SG, 4B (50 sts)

Row 5: 2B, 2SG, 2SH, 6W, 2SH, 2BL, 2SH, 14W, 2SH, 2BL, 2SH, 6W, 2SH, 2SG, 2B (50 sts)

Row 6: 2B, 2SG, 2SH, 4W, 2CB, 26W, 2CB, 4W, 2SH, 2SG, 2B (50 sts)

Row 7: 2B, 2SG, 2SH, 2W, 2CB, 30W, 2CB, 2W, 2SH, 2SG, 2B (50 sts)

Row 8: 2B, 2SG, 2SH, 2CB, 4W, 6SH, 14W, 6SH, 4W, 2CB, 2SH, 2SG, 2B (50 sts)

Row 9: 2B, 2SG, 2SH, 8W, 2SH, 4BL, 10W, 4BL, 2SH, 8W, 2SH, 2SG, 2B (50 sts)

Row 10: 4B, 2SG, 2SH, 10W, 14BL, 10W, 2SH, 2SG, 4B (50 sts)

Row 11: 4B, 4SG, 12W, 2SH, 6BL, 2SH, 12W, 4SG, 4B (50 sts)

Row 12: 4B, 2SG, 10W, 2SH, 14W, 2SH, 10W, 2SG, 4B (50 sts)

Row 13: 4B, 2SG, 4W, 2BL, 4SH, 18W, 4SH, 2BL, 4W, 2SG, 4B (50 sts)

Row 14: 4B, 2SG, 2W, 4SH, 6BL, 2SH, 10W, 2SH, 6BL, 4SH, 2W, 2SG, 4B (50 sts)

Row 15: 4B, 2SG, 2W, 2SH, 10BL, 2SH, 6W, 2SH, 10BL, 2SH, 2W, 2SG, 4B (50 sts)

Row 16: 4B, 2SG, 38W, 2SG, 4B (50 sts)

Row 17: 6B, 38SG, 6B (50 sts)

Row 18: 6B, 2SG, 34W, 2SG, 6B (50 sts)

Row 19: 6B, 4SG, 30W, 4SG, 6B (50 sts)

Row 20: 6B, 4SG, 30W, 4SG, 6B (50 sts)

Row 21: 8B, 2SG, 4SH, 22W, 4SH, 2SG, 8B (50 sts)

Row 22: 10B, 4SG, 2SH, 18W, 2SH, 4SG, 10B (50 sts)

Row 23: 14B, 6SG, 10W, 6SG, 14B (50 sts)

Row 24: 20B, 10SG, 20B (50 sts)

Row 25: 50B (50 sts)

### IMPORTANT NOTES:

These written instructions include color/stitch counts for doing 2 HDC per block. **HOWEVER**, the rows are not doubled here. To double the rows by reading the written instructions only, follow the directions below.

The **FIRST** time you work a row, read the instructions from left to right. The **SECOND** time you work a row, read the instructions backwards from right to left. Then continue onto the next row using this same technique.