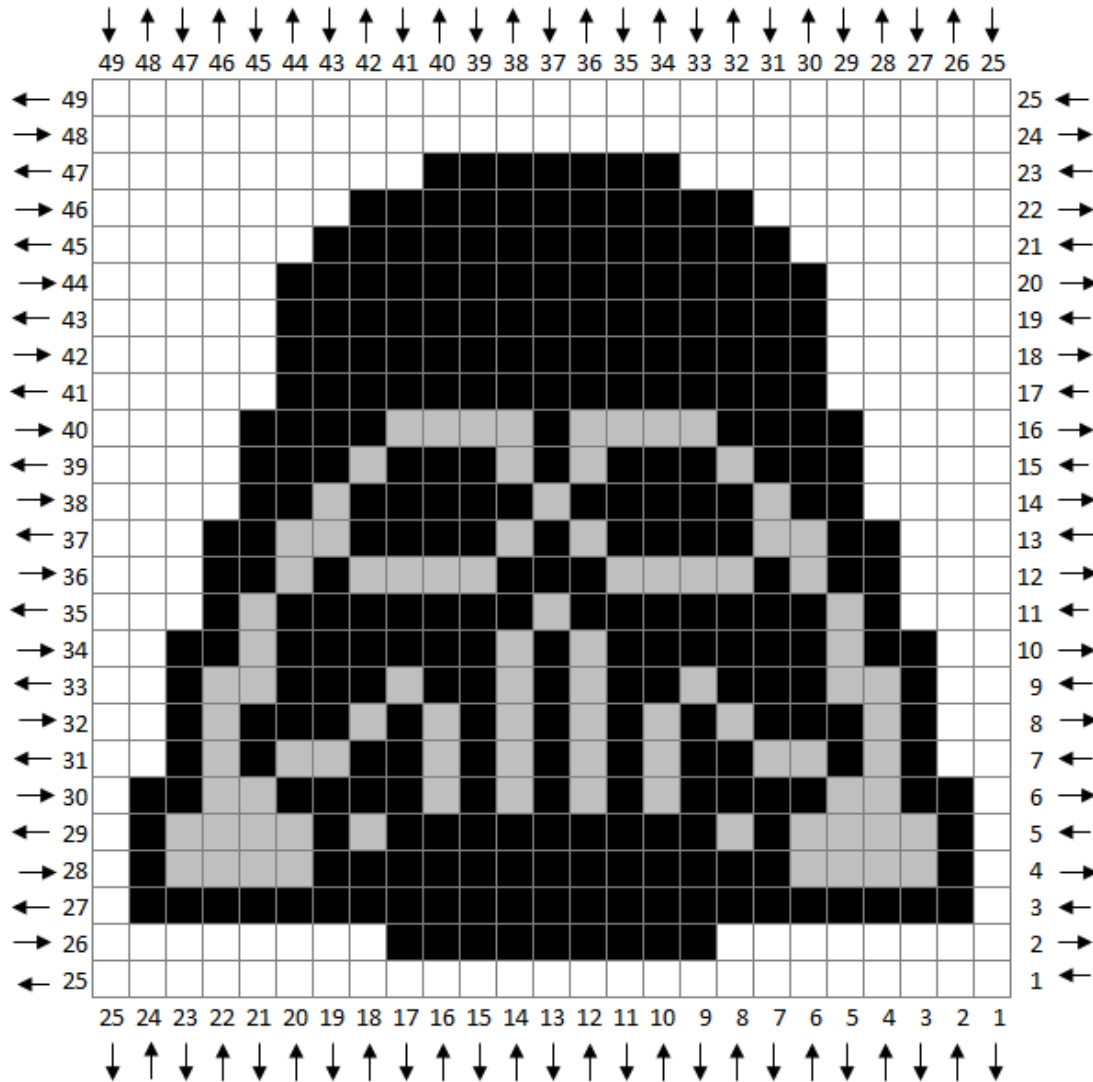


STAR WARS CAL PANEL: DARTH VADER



Star Wars CAL Darth Vader

Recommended Hook: Size G6/4 mm

Yarn Suggestions

Vanna's Choice - Black, Silver Heather

I Love This Yarn - Metallic Black (Background)

VC - Black
 VC - Silver Heather

IMPORTANT NOTES:

If you are using Straight HDC, ignore the arrows on the graph; these are designed for use with the C2C technique.

To do as I do, chain 52 (50 + 2 turning chains). Following the arrows on the left/right, start in the 3rd ch space from the hook and begin row 1.

Work 2 HDC per block on the graph. Work each row twice. The FIRST time you work a row, read the graph from right to left. The SECOND time you work a row, read the graph from left to right. Then continue onto the next row using this same technique.

STAR WARS CAL PANEL: DARTH VADER

Yarn Colors:

BL=Black

SH=Silver Heather

B=Background Color

Row 1: 50B (50 sts)

Row 2: 16B, 18BL, 16B (50 sts)

Row 3: 2B, 46BL, 2B (50 sts)

Row 4: 2B, 2BL, 8SG, 26BL, 8SG, 2BL, 2B (50 sts)

Row 5: 2B, 2BL, 8SG, 2BL, 2SG, 18BL, 2SG, 2BL, 8SG, 2BL, 2B (50 sts)

Row 6: 2B, 4BL, 4SG, 8BL, 2SG, 2BL, 2SG, 2BL, 2SG, 2BL, 2SG, 8BL, 4SG, 4BL, 2B (50 sts)

Row 7: 4B, 2BL, 2SG, 2BL, 4SG, 4BL, 2SG, 2BL, 2SG, 2BL, 2SG, 2BL, 2SG, 4BL, 4SG, 2BL, 2SG, 2BL, 4B (50 sts)

Row 8: 4B, 2BL, 2SG, 6BL, 2SG, 2BL, 2SG, 2BL, 2SG, 2BL, 2SG, 2BL, 2SG, 2BL, 2SG, 6BL, 2SG, 2BL, 4B (50 sts)

Row 9: 4B, 2BL, 4SG, 6BL, 2SG, 4BL, 2SG, 2BL, 2SG, 4BL, 2SG, 6BL, 4SG, 2BL, 4B (50 sts)

Row 10: 4B, 4BL, 2SG, 12BL, 2SG, 2BL, 2SG, 12BL, 2SG, 4BL, 4B (50 sts)

Row 11: 6B, 2BL, 2SG, 14BL, 2SG, 14BL, 2SG, 2BL, 6B (50 sts)

Row 12: 6B, 4BL, 2SG, 2BL, 8SG, 6BL, 8SG, 2BL, 2SG, 4BL, 6B (50 sts)

Row 13: 6B, 4BL, 4SG, 8BL, 2SG, 2BL, 2SG, 8BL, 4SG, 4BL, 6B (50 sts)

Row 14: 8B, 4BL, 2SG, 10BL, 2SG, 10BL, 2SG, 4BL, 8B (50 sts)

Row 15: 8B, 6BL, 2SG, 6BL, 2SG, 2BL, 2SG, 6BL, 2SG, 6BL, 8B (50 sts)

Row 16: 8B, 8BL, 8SG, 2BL, 8SG, 8BL, 8B (50 sts)

Row 17: 10B, 30BL, 10B (50 sts)

Row 18: 10B, 30BL, 10B (50 sts)

Row 19: 10B, 30BL, 10B (50 sts)

Row 20: 10B, 30BL, 10B (50 sts)

Row 21: 12B, 26BL, 12B (50 sts)

Row 22: 14B, 22BL, 14B (50 sts)

Row 23: 18B, 14BL, 18B (50 sts)

Row 24: 50B (50 sts)

Row 25: 50B (50 sts)

IMPORTANT NOTES:

These written instructions include color/stitch counts for doing 2 HDC per block. **HOWEVER**, the rows are not doubled here. To double the rows by reading the written instructions only, follow the directions below.

The **FIRST** time you work a row, read the instructions from left to right. The **SECOND** time you work a row, read the instructions backwards from right to left. Then continue onto the next row using this same technique.