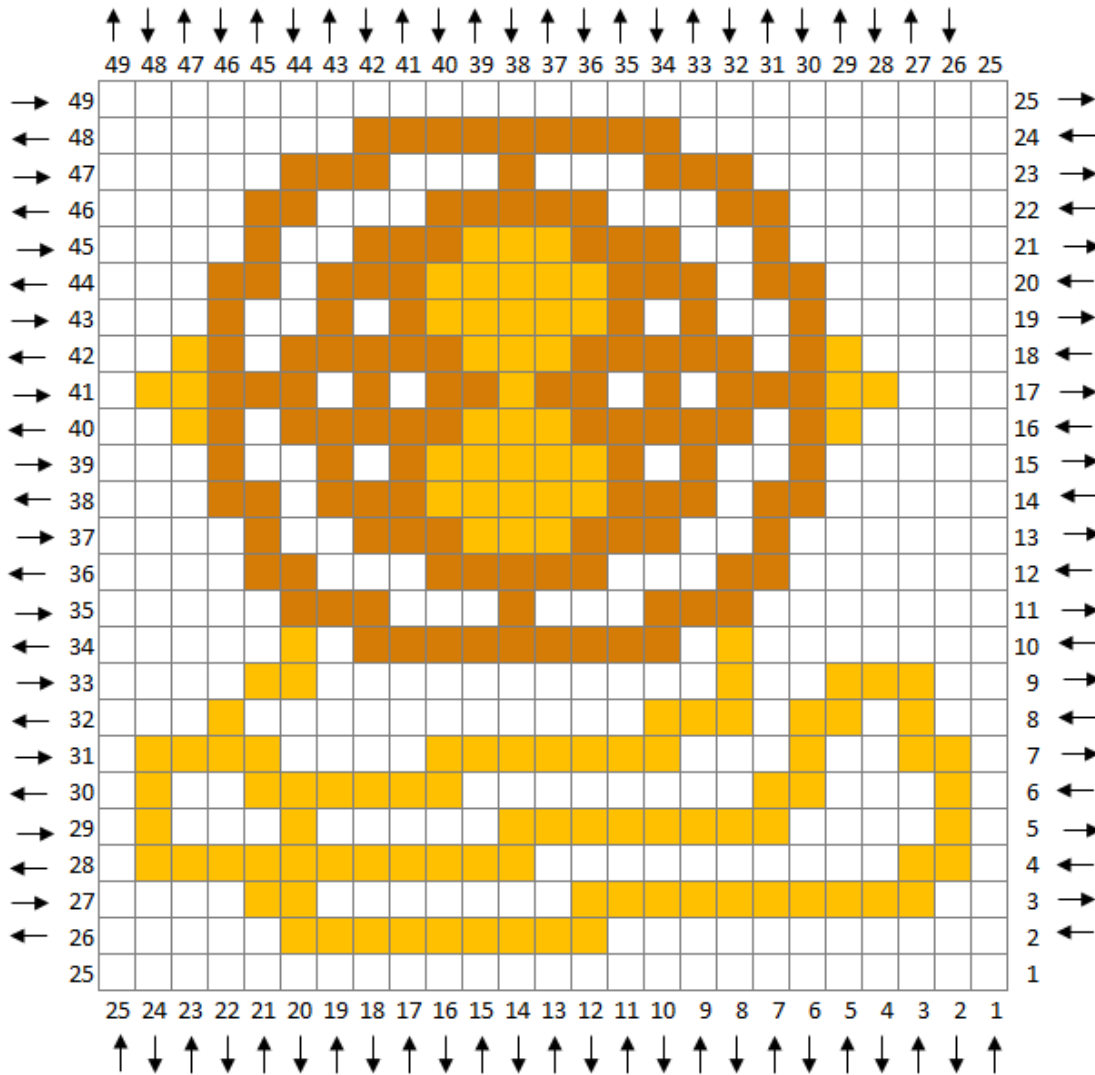


Harry Potter CAL – Alternate Square: Time Turner



Harry Potter CAL
 Alternate Square:
 Time Turner

Recommended Materials:
 Size I/5.5mm crochet hook

Suggested Yarn is Vanna's Choice in:
 Honey, Mustard and
 a background color of your choice

- VC - Honey
- VC - Mustard

Increasing (Rows 1-25)

First block of the row: Ch 4. Work 1 hdc in the 3rd chain space from the hook and in the next chain space.

Remaining blocks of the row: Join to the next block with a slip stitch in the "gap". Ch 2. Work 2 hdc in the "gap".

Decreasing (Rows 26-49)

First block of the row: Work 2 slip stitches up the edge of the work to get to the top row. Ch 2. Work 2 hdc in the "gap".

Remaining blocks of the row: Join to the next block with a slip stitch in the "gap". Ch 2. Work 2 hdc in the "gap".

Alternate Square: Time Turner

Yarn Colors:

H=Honey

M=Mustard

B=Background Color

Row 1: 1B (1 block)
Row 2: 2B (2 blocks)
Row 3: 3B (3 blocks)
Row 4: 4B (4 blocks)
Row 5: 2B, 2M, 1B (5 blocks)
Row 6: 1B, 3M, 2B (6 blocks)
Row 7: 2B, 1M, 2B, 1M, 1B (7 blocks)
Row 8: 1B, 1M, 3B, 1M, 2B (8 blocks)
Row 9: 2B, 1M, 3B, 1M, 2B (9 blocks)
Row 10: 2B, 1M, 4B, 1M, 2B (10 blocks)
Row 11: 2B, 1M, 1B, 2M, 2B, 1M, 2B (11 blocks)
Row 12: 3B, 5M, 1B, 1M, 2B (12 blocks)
Row 13: 1B, 2M, 1B, 1M, 2B, 2M, 4B (13 blocks)
Row 14: 9B, 1M, 1B, 2M, 1B (14 blocks)
Row 15: 1B, 1M, 2B, 1M, 2B, 1M, 7B (15 blocks)
Row 16: 7B, 3M, 1B, 1M, 2B, 1M, 1B (16 blocks)
Row 17: 1B, 1M, 1B, 2M, 1B, 2M 1B, 1M, 7B (17 blocks)
Row 18: 6B, 2H, 3B, 1M, 1B, 2M, 1B, 1M, 1B (18 blocks)
Row 19: 1B, 1M, 1B, 1M, 2B, 1M, 2B, 5H, 5B (19 blocks)
Row 20: 3B, 2M, 2H, 2B, 2H, 2B, 1M, 2B, 1M, 1B, 1M, 1B (20 blocks)
Row 21: 1B, 1M, 1B, 1M, 1B, 2M, 2B, 1H, 5B, 1H, 1M, 4B (21 blocks)
Row 22: 4B, 1M, 1H, 2B, 2H, 2B, 1H, 2B, 2M, 1B, 2M, 2B (22 blocks)
Row 23: 2B, 2M, 1B, 1M, 3B, 1H, 1B, 7H, 5B (23 blocks)
Row 24: 5B, 1H, 1B, 2H, 1B, 5H, 3B, 3M, 3B (24 blocks)
Row 25: 3B, 1M, 1B, 1M, 3B, 1H, 1B, 1H, 2M, 2H, 1B, 1H, 1B, 1H, 5B (25 blocks)

[Begin Decreasing]

Row 26: 5B, 1H, 1B, 3H, 3M, 1H, 1B, 1H, 3B, 1M, 1B, 1M, 2B (24 blocks)
Row 27: 1B, 1M, 2B, 1M, 2B, 1H, 1B, 1H, 3M, 1H, 1B, 2H, 1B, 1H, 4B (23 blocks)
Row 28: 3B, 1H, 1B, 1H, 1B, 2H, 3M, 1H, 1B, 1H, 1B, 1M, 1B, 1M, 1B, 1M, 1B (22 blocks)
Row 29: 1B, 5M, 1H, 1B, 1H, 3M, 4H, 1B, 1H, 3B (21 blocks)
Row 30: 2B, 1H, 1B, 2H, 5M, 2H, 1B, 1H, 3B, 1M, 1B (20 blocks)
Row 31: 5B, 1H, 1B, 4H, 3M, 1H, 1B, 1H, 2B (19 blocks)
Row 32: 2B, 1H, 1B, 1H, 3M, 2H, 1B, 1H, 1B, 1H, 4B (18 blocks)
Row 33: 4B, 1H, 1B, 2H, 1B, 1H, 3M, 1H, 1B, 1H, 1B (17 blocks)
Row 34: 1B, 1H, 1B, 1H, 3M, 3H, 1B, 1H, 4B (16 blocks)
Row 35: 3B, 1H, 1B, 1H, 1B, 2H, 2M, 1H, 1B, 1H, 1B (15 blocks)
Row 36: 1B, 5H, 1B, 2H, 1B, 1H, 3B (14 blocks)
Row 37: 3B, 7H, 1B, 1H, 1B (13 blocks)
Row 38: 1B, 1H, 2B, 2H, 2B, 1H, 1M, 2B (12 blocks)
Row 39: 2B, 1M, 1H, 5B, 1H, 1B (11 blocks)
Row 40: 1B, 2H, 2B, 2H, 2M, 1B (10 blocks)
Row 41: 3B, 5H, 1B (9 blocks)
Row 42: 2B, 2H, 4B (8 blocks)
Row 43: 7B (7 blocks)
Row 44: 6B (6 blocks)
Row 45: 5B (5 blocks)
Row 46: 4B (4 blocks)
Row 47: 3B (3 blocks)
Row 48: 2B (2 blocks)
Row 49: 1B (1 block)