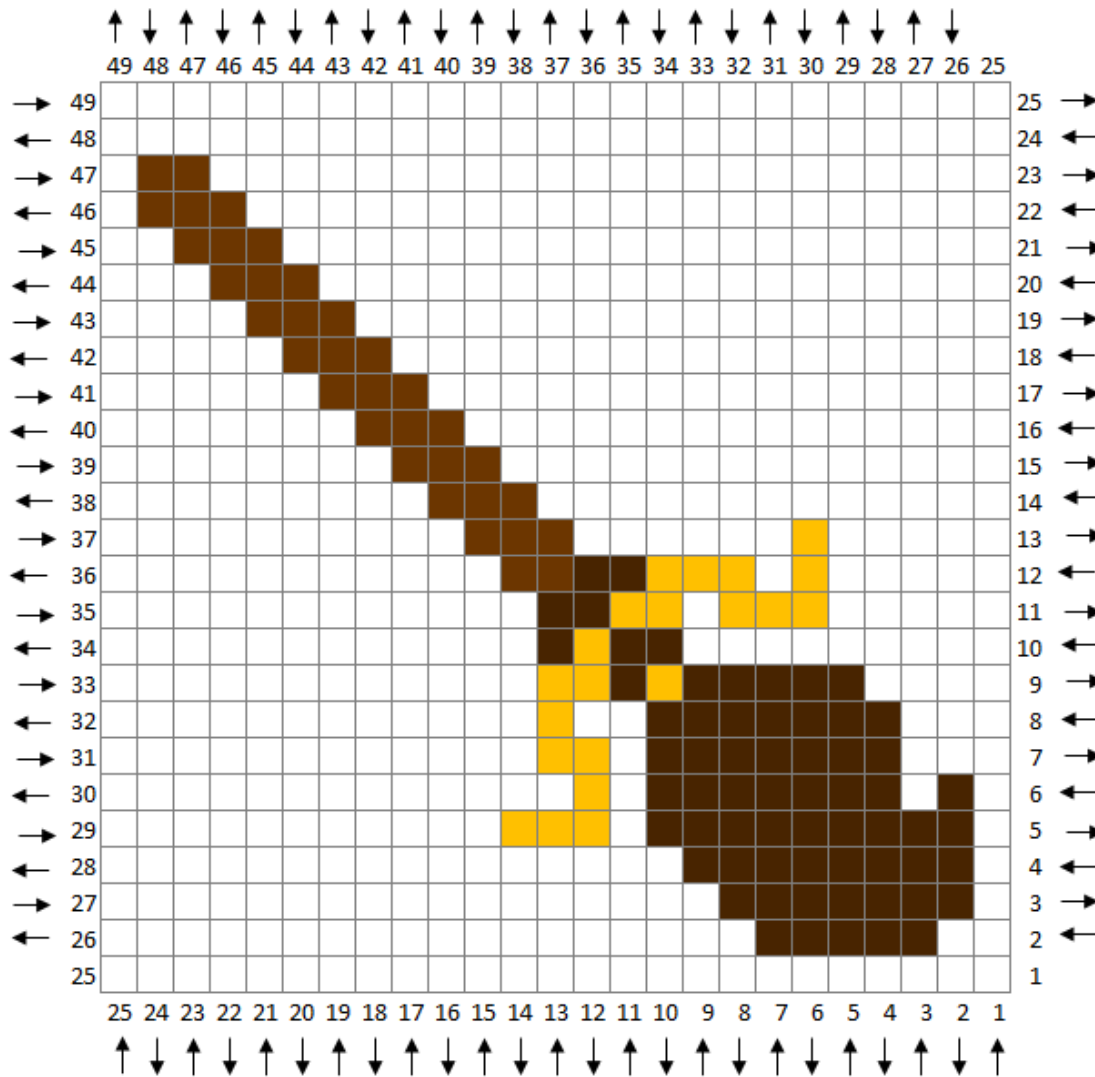


Harry Potter CAL – Alternate Square: Broomstick



Harry Potter CAL
 Alternate Square:
 Broomstick

Recommended Materials:
 Size I/5.5mm crochet hook

Suggested Yarn is Vanna's Choice in:
 Black, Chocolate, Mustard, Toffee and
 a background color of your choice

- VC - Black
- VC - Chocolate
- VC - Mustard
- VC - Toffee

Increasing (Rows 1-25)

First block of the row: Ch 4. Work 1 hdc in the 3rd chain space from the hook and in the next chain space.

Remaining blocks of the row: Join to the next block with a slip stitch in the "gap". Ch 2. Work 2 hdc in the "gap".

Decreasing (Rows 26-49)

First block of the row: Work 2 slip stitches up the edge of the work to get to the top row. Ch 2. Work 2 hdc in the "gap".

Remaining blocks of the row: Join to the next block with a slip stitch in the "gap". Ch 2. Work 2 hdc in the "gap".

Alternate Square: Broomstick

Yarn Colors:

BL=Black

C=Chocolate

M=Mustard

TO=Toffee

B=Background Color

Row 1: 1B (1 block)

Row 2: 2B (2 blocks)

Row 3: 3B (3 blocks)

Row 4: 1B, 2C, 1B (4 blocks)

Row 5: 1B, 3C, 1B (5 blocks)

Row 6: 1B, 4C, 1B (6 blocks)

Row 7: 1B, 5C, 1B (7 blocks)

Row 8: 3B, 4C, 1B (8 blocks)

Row 9: 2B, 4C, 3B (9 blocks)

Row 10: 3B, 5C, 2B (10 blocks)

Row 11: 3B, 5C, 3B (11 blocks)

Row 12: 4B, 5C, 3B (12 blocks)

Row 13: 4B, 5C, 4B (13 blocks)

Row 14: 5B, 5C, 4B (14 blocks)

Row 15: 5B, 4C, 6B (15 blocks)

Row 16: 5B, 1M, 1B, 3C, 1B, 1M, 4B (16 blocks)

Row 17: 4B, 2M, 1B, 2C, 1B, 2M, 5B (17 blocks)

Row 18: 5B, 1M, 1B, 1M, 1B, 1M, 1B, 1M, 1B, 1M, 4B (18 blocks)

Row 19: 6B, 1M, 1B, 2C, 1B, 1M, 7B (19 blocks)

Row 20: 8B, 2M, 1C, 2M, 7B (20 blocks)

Row 21: 8B, 4M, 9B (21 blocks)

Row 22: 10B, 3C, 9B (22 blocks)

Row 23: 10B, 2C, 11B (23 blocks)

Row 24: 12B, 1TO, 11B (24 blocks)

Row 25: 11B, 2TO, 12B (25 blocks)

[Begin Decreasing]

Row 26: 12B, 1TO, 11B (24 blocks)

Row 27: 10B, 2TO, 11B (23 blocks)

Row 28: 11B, 1TO, 10B (22 blocks)

Row 29: 9B, 2TO, 10B (21 blocks)

Row 30: 10B, 1TO, 9B (20 blocks)

Row 31: 8B, 2TO, 9B (19 blocks)

Row 32: 9B, 1TO, 8B (18 blocks)

Row 33: 7B, 2TO, 8B (17 blocks)

Row 34: 8B, 1TO, 7B (16 blocks)

Row 35: 6B, 2TO, 7B (15 blocks)

Row 36: 7B, 1TO, 6B (14 blocks)

Row 37: 5B, 2TO, 6B (13 blocks)

Row 38: 6B, 1TO, 5B (12 blocks)

Row 39: 4B, 2TO, 5B (11 blocks)

Row 40: 5B, 1TO, 4B (10 blocks)

Row 41: 3B, 2TO, 4B (9 blocks)

Row 42: 4B, 1TO, 3B (8 blocks)

Row 43: 2B, 2TO, 3B (7 blocks)

Row 44: 3B, 1TO, 2B (6 blocks)

Row 45: 1B, 2TO, 2B (5 blocks)

Row 46: 2B, 1TO, 1B (4 blocks)

Row 47: 3B (3 blocks)

Row 48: 2B (2 blocks)

Row 49: 1B (1 block)