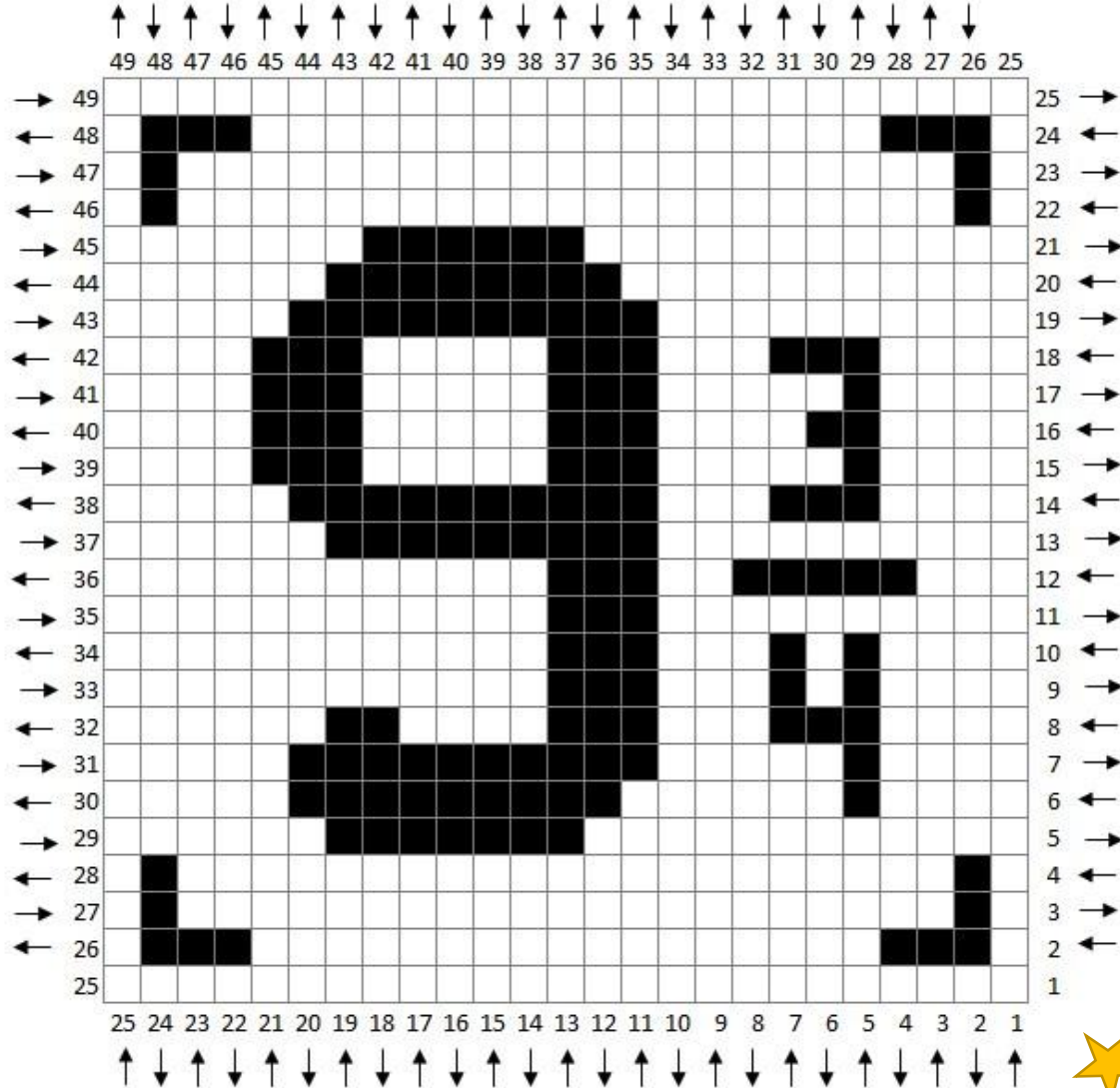


# Harry Potter CAL - Square #2: Platform 9 3/4



**Harry Potter CAL**  
 Square #2:  
 Platform 9 3/4

Recommended Materials:  
 Size I/5.5mm crochet hook

Suggested Yarn is Vanna's Choice in:  
 Black and a background color of your choice

■ VC - Black

\*Suggested background color: Vanna's Choice in Mustard



Start in the lower right-hand corner!

## Increasing (Rows 1-25)

First block of the row: Ch 4. Work 1 hdc in the 3<sup>rd</sup> chain space from the hook and in the next chain space.

Remaining blocks of the row: Join to the next block with a slip stitch in the "gap". Ch 2. Work 2 hdc in the "gap".

## Decreasing (Rows 26-49)

First block of the row: Work 2 slip stitches up the edge of the work to get to the top row. Ch 2. Work 2 hdc in the "gap".

Remaining blocks of the row: Join to the next block with a slip stitch in the "gap". Ch 2. Work 2 hdc in the "gap".

## Square #2: Platform 9 $\frac{3}{4}$

**Yarn Colors:**  
BL=Black      B=Background Color

Row 1: 1B (1 block)  
Row 2: 2B (2 blocks)  
Row 3: 1B, 1BL, 1B (3 blocks)  
Row 4: 1B, 2BL, 1B (4 blocks)  
Row 5: 1B, 1BL, 1B, 1BL, 1B (5 blocks)  
Row 6: 6B (6 blocks)  
Row 7: 7B (7 blocks)  
Row 8: 8B (8 blocks)  
Row 9: 9B (9 blocks)  
Row 10: 4B, 1BL, 5B (10 blocks)  
Row 11: 6B, 1BL, 4B (11 blocks)  
Row 12: 4B, 1BL, 7B (12 blocks)  
Row 13: 7B, 2BL, 4B (13 blocks)  
Row 14: 4B, 1BL, 1B, 1BL, 7B (14 blocks)  
Row 15: 8B, 1BL, 2B, 1BL, 3B (15 blocks)  
Row 16: 4B, 1BL, 1B, 1BL, 9B (16 blocks)  
Row 17: 4B, 3BL, 4B, 1BL, 5B (17 blocks)  
Row 18: 4B, 1BL, 1B, 1BL, 3B, 4BL, 4B (18 blocks)  
Row 19: 4B, 5BL, 2B, 1BL, 1B, 2BL, 4B (19 blocks)  
Row 20: 4B, 1BL, 1B, 1BL, 3B, 6BL, 4B (20 blocks)  
Row 21: 4B, 3BL, 1B, 3BL, 4B, 2BL, 4B (21 blocks)  
Row 22: 4B, 1BL, 5B, 3BL, 2B, 3BL, 4B (22 blocks)  
Row 23: 1B, 1BL, 2B, 3BL, 3B, 3BL, 4B, 1BL, 3B, 1BL, 1B (23 blocks)  
Row 24: 1B, 1BL, 4B, 1BL, 3B, 3BL, 4B, 2BL, 3B, 1BL, 1B (24 blocks)  
Row 25: 1B, 1BL, 3B, 3BL, 4B, 3BL, 8B, 1BL, 1B (25 blocks)

[Begin Decreasing]  
Row 26: 1B, 1BL, 7B, 4BL, 4B, 2BL, 3B, 1BL, 1B (24 blocks)  
Row 27: 1B, 1BL, 8B, 5BL, 6B, 1BL, 1B (23 blocks)  
Row 28: 7B, 3BL, 1B, 2BL, 9B (22 blocks)  
Row 29: 8B, 2BL, 2B, 3BL, 6B (21 blocks)  
Row 30: 6B, 2BL, 3B, 2BL, 7B (20 blocks)  
Row 31: 6B, 2BL, 4B, 2BL, 5B (19 blocks)  
Row 32: 5B, 2BL, 4B, 1BL, 6B (18 blocks)  
Row 33: 5B, 2BL, 3B, 3BL, 4B (17 blocks)  
Row 34: 4B, 3BL, 2B, 2BL, 5BL (16 blocks)  
Row 35: 4B, 3BL, 1B, 3BL, 4B (15 blocks)  
Row 36: 4B, 6BL, 4B (14 blocks)  
Row 37: 4B, 5BL, 4B (13 blocks)  
Row 38: 4B, 4BL, 4B (12 blocks)  
Row 39: 11B (11 blocks)  
Row 40: 10B (10 blocks)  
Row 41: 9B (9 blocks)  
Row 42: 8B (8 blocks)  
Row 43: 7B (7 blocks)  
Row 44: 6B (6 blocks)  
Row 45: 1B, 1BL, 1B, 1BL, 1B (5 blocks)  
Row 46: 1B, 2BL, 1B (4 blocks)  
Row 47: 1B, 1BL, 1B (3 blocks)  
Row 48: 2B (2 blocks)  
Row 49: 1B (1 block)